

# Content

03

MD's Note ← 01

04-05

In-house R&D/  
Quality Control

06

Service Support Centre ← 03

07

Customized Solutions  
Designing Team

08

Technical Support ← 05

09

Mission Tech  
Training Program

10

AMS ← 07

11

HMS

08 →

12-59

Product Range ←

→	CP Silver Series	12-13
→	Illumax Dual Light	14-15
→	IP Solution	16-23
→	ViDu Series	24-29
→	Brand Portfolio	30-31
→	NVR	32-34
→	Guard+	35
→	Project Series	36
→	Video Storage	37
→	HD Solution	38-39
→	Body Worn Solution	40-41
→	Mobile DVR/NVR Solution	42-43
→	PoE Switches	44-47
→	Time & Attendance	48-49
→	Accessories	50-53
→	Network Rack	54-59



## MD's Note

### **Aditya Khemka**

Managing Director, CP PLUS

The world today offers endless possibilities, and with AI at the core of our innovation, we are turning those possibilities into realities. At CP PLUS, our vision goes beyond boundaries, for we simply aim to make cutting-edge security solutions a part of every life, every home, and every community.

We are proud to be at the forefront of 'Made-in-Bharat' advancements, leading a movement that redefines excellence and empowers India on the global stage. The next decade is ours to shape, as we aim to become a leader in AI-powered video IoT solutions, bringing safety, trust, and reliability to every corner of the globe.

This is our time to lead, to innovate, and to create. Together, we are not just shaping the future of security; we are building a legacy of progress and prosperity. With a focus on accessibility, inclusivity, and innovation, we are committed to ensuring that no community, big or small, is left behind.

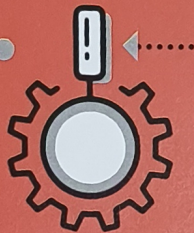
With a never-fading dedication, we continue to push boundaries, design transformative technologies, and provide solutions that touch lives meaningfully. Each step forward is a testament to our promise of a secure and better tomorrow.

Let's create a safer, smarter world by providing Security to All - AI for All.

Jai Hind!

# In-house R&D team

pro-actively caters  
to the dynamic  
market demands



## Product specification

- Documentation of product design
- Costing of components and sourcing
- Roadmap of product life cycle
- Gauging market demand



## Engineering Validation & Testing

- Firmware & application development
- Server integration
- Creation of prototype with subsequent OEM discussions



## Production Validation & Testing

- Rigorous testing iterations for checking operating performance
- Production trial runs for checking manufacturing process efficiency
- Final software release after eliminating all bugs



## Design Validation & Testing

- Hardware & software integration
- Beta testing for ironing out bugs



## Mass Production

- Regular monitoring with numerous quality checks
- Sample testing for detecting and fixing defective products
- Cost optimization process for reducing manufacturing cost



## Regular Monitoring

- Regular software upgrades & bug fixes for ensuring smooth user experience
- Phasing out of product at end of lifecycle



# In-house Quality Control

A dedicated in-house quality control team ensures focus on quality across the wide spectrum of product offerings



#### Basic inspection

- Colour
- Housing material
- Matching specifications
- Label printing



#### Quality inspection

- Light test •
- Lens focus test •
- IR board and sensor check •
- Water proofing •
- Audio test •
- Drop test •



#### Packaging inspection

- Camera box printing
- Logo printing
- Carton label check
- Manual check
- Hologram check
- Packaging of right accessories



#### Detailed report on anomaly

Dedicated team based out of Noida that undertakes the most stringent processes

# Customer First Always, Every time

Redrawing boundaries to erase them because our bond knows no boundaries or limits. Ours is a brand that stays with you for life. Our job is not just to provide security to your home but to revisualize how the quality of life can be improved in our community because in CP PLUS, the customer always comes first every time. Thus, to extend our hearty support and assistance to you, we are continuously expanding our presence in every corner of the country & beyond while, at the same time, becoming more and more accessible, approachable as well as responsive.



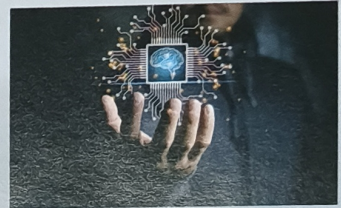
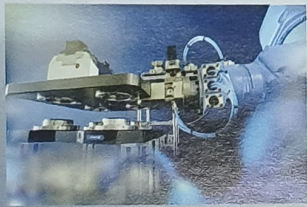
## India Presence

- ★ Service/Technical Support Center
- ★ Branch/RMA & SWAP Center



# Customized Solutions Designing Team

We have a customized solutions designing team that earnestly crafts tailor-made solutions for all the different verticals ranging from banking to even the oil and gas industry after having done thorough field work and perfectly understanding the specific requirements of any given premises, may it be a shopping mall, a judicial court or entire multi-acred educational institutes. Our designing team is recognized for exceptional technical solutions and with integrated, extensible and flexible designs, they more than fulfil the evolving business requirements.





# Devoted Technical Service Support

We have designed, trained and structured the most capable and proficient technical support team to enhance the experience for our customers and resolve their issues instantaneously.

Our support team consists of skilled professionals who provide dedicated support for the entire range of CP PLUS products every weekday. Recognizing the need to be vocal for local in India, we also provide technical support in 12 regional languages to readily cater to the lingual diversity of our country.





# CP PLUS Certification Training Program For System Integrators & Partners

The security & surveillance industry is on an upswing with a burgeoning need for trained and qualified System Integrators, who can design customized solutions as per the customer's needs, as well as in the most efficient and effective manner. The pace of the industry is such that it requires system integrators to be consistently updated and informed about the latest technological advancements, and the skill sets have to be honed to work with the latest state-of-the-art products and solutions. The CP PLUS Mission Tech Training Program is a step in the direction to provide that much-needed training with an effort to keep our channel partners upskilled and our services relevant.





# RELIABILITY INSPIRES EFFICIENCY

## Workforce Management System on Cloud

The Attendance Management Solution (AMS) is a cloud-based facilitation tool for employers and employees, to track attendance, leaves, late comings, holidays, leave applications, and conveyance time & manage costs on a daily/ monthly basis.

By simply downloading the AMS application on smart phones, employees can mark their attendance from anywhere, wherein their location and login time is captured using GPS. Employers, on the other hand, can keep a track of the regularity, attendance and punctuality of employees from anywhere, anytime. Ready access to the consolidated data of all employees with regard to their attendance, leaves and conveyance, in one place, helps them generate employee-efficiency reports and computes salaries with ease. AMS effectively plugs the loopholes of traditional tracking systems and provides transparency as well as comfort to both the employer and employees.

**Making Worklife Easier and More Convenient than ever before, AMS performs Better Than a Clock to help you:**

- ▶ **Monitor Employee Working Hours**
- ▶ **Improve Productivity**
- ▶ **Inspire Transparency**
- ▶ **Speed - Up Payroll**
- ▶ **Lower Labor Costs**
- ▶ **& many, many more.**





# Revolutionizing Surveillance:

## Surveillance:

### CP PLUS HMS, Your CCTV Health Monitoring System!

Ensuring the smooth functioning of surveillance systems is crucial for the efficiency of a security solution. While monitoring the performance of a small security setup is easily possible, the complex systems that involve multiple cameras and recorders, pose a serious challenge.

The Health Monitoring System by CP PLUS provides a real-time health status of your surveillance devices; it keeps you notified of the perceived critical issues and potential problems such as device going offline, hard drive failure, recording status, network outages, tampering, etc. Investing in the HMS helps you detect system issues automatically. It enables instant reporting of live incidents, reduces system downtime since issues are detected and rectified at the onset and provides daily system supports as well as live status web page view.

CP PLUS provides the HMS solution software which comes complete with live system reporting, alerts and alarms for hard drive failure, recording status, network outages, tampering, etc.

- **Camera failure,**
- **Malfunction issues**
- **Power outages**
- **Recording problems**



Extensive Range of  
**NETWORK CAMERAS**

# CP Silver

S E R I E S



5MP Camera



Built-in Audio



H.265 Codec



Full Color\*



Onvif Support\*



PoE Support



## 2 MP Series

### CP-UNC-DA21PL3-Y

2MP IR Network Dome Camera



- Features:
- 1/3.2" 2MP PS CMOS Image Sensor
  - Max. 2MP (1920 × 1080) @25/30fps
  - Instastream, H.265 and Smart H.264+ dual-stream encoding
  - DWDR, Day/Night (ICR), 3D-DNR, ROI, AWB, AGC, BLC, HLC
  - 3.6mm fixed lens
  - IR Range of 30 Mtrs, IP67, PoE
  - Mobile Software: iCMOB, gCMOB, CMS Software: KVMS Pro Lite

### CP-UNC-DA21PL3C-Y

2MP IR Network Dome Camera



- Features:
- 1/3.2" 2MP PS CMOS Image Sensor
  - Max. 2MP (1920 × 1080) @25/30fps
  - Instastream, H.265 and Smart H.264+ dual-stream encoding
  - DWDR, Day/Night (ICR), 3D-DNR, ROI, AWB, AGC, BLC, HLC
  - 3.6mm fixed lens
  - IR Range of 30 Mtrs, IP67, PoE
  - Support Built-in Mic
  - Mobile Software: iCMOB, gCMOB, CMS Software: KVMS Pro Lite

### CP-UNC-TA21PL3-Y

2MP IR Network Bullet Camera



- Features:
- 1/3.2" 2MP PS CMOS Image Sensor
  - Max. 2MP (1920 × 1080) @25/30fps
  - Instastream, H.265 and Smart H.264+ dual-stream encoding
  - DWDR, Day/Night (ICR), 3D-DNR, ROI, AWB, AGC, BLC, HLC
  - 3.6mm fixed lens
  - IR Range of 30 Mtrs, IP67, PoE
  - Mobile Software: iCMOB, gCMOB, CMS Software: KVMS Pro Lite

### CP-UNC-TA21PL3C-Y

2MP IR Network Bullet Camera



- Features:
- 1/3.2" 2MP PS CMOS Image Sensor
  - Max. 2MP (1920 × 1080) @25/30fps
  - Instastream, H.265 and Smart H.264+ dual-stream encoding
  - DWDR, Day/Night (ICR), 3D-DNR, ROI, AWB, AGC, BLC, HLC
  - 3.6mm fixed lens
  - IR Range of 30 Mtrs, IP67, PoE
  - Support Built-in Mic
  - Mobile Software: iCMOB, gCMOB, CMS Software: KVMS Pro Lite

## 4 MP Series

### CP-UNC-DA41PL3-Y

4MP IR Network Dome Camera



- Features:
- 1/3" 4MP PS CMOS Image Sensor
  - Max. 4MP(2560 × 1440)@30fps
  - Instastream, H.265 and Smart H.264+ dual-stream encoding
  - DWDR, Day/Night (ICR), 3D-DNR, ROI, AWB, AGC, BLC, HLC
  - 3.6mm fixed lens
  - IR Range of 30 Mtrs, IP67, PoE
  - Mobile Software: iCMOB, gCMOB, CMS Software: KVMS Pro Lite

### CP-UNC-DA41PL3C-Y

4MP IR Network Dome Camera



- Features:
- 1/3" 4MP PS CMOS Image Sensor
  - Max. 4MP(2560 × 1440)@30fps
  - Instastream, H.265 and Smart H.264+ dual-stream encoding
  - DWDR, Day/Night (ICR), 3D-DNR, ROI, AWB, AGC, BLC, HLC
  - 3.6mm fixed lens
  - IR Range of 30 Mtrs, IP67, PoE
  - Support Built-in Mic
  - Mobile Software: iCMOB, gCMOB, CMS Software: KVMS Pro Lite

### CP-UNC-TA41PL3-Y

4MP IR Network Bullet Camera



- Features:
- 1/3" 4MP PS CMOS Image Sensor
  - Max. 4MP(2560 × 1440)@30fps
  - Instastream, H.265 and Smart H.264+ dual-stream encoding
  - DWDR, Day/Night (ICR), 3D-DNR, ROI, AWB, AGC, BLC, HLC
  - 3.6mm fixed lens
  - IR Range of 30 Mtrs, IP67, PoE
  - Mobile Software: iCMOB, gCMOB, CMS Software: KVMS Pro Lite

### CP-UNC-TA41PL3C-Y

4MP IR Network Bullet Camera



- Features:
- 1/3" 4MP PS CMOS Image Sensor
  - Max. 4MP(2560 × 1440)@30fps
  - Instastream, H.265 and Smart H.264+ dual-stream encoding
  - DWDR, Day/Night (ICR), 3D-DNR, ROI, AWB, AGC, BLC, HLC
  - 3.6mm fixed lens
  - IR Range of 30 Mtrs, IP67, PoE
  - Support Built-in Mic
  - Mobile Software: iCMOB, gCMOB, CMS Software: KVMS Pro Lite

## 5 MP Series

### CP-UNC-DA51PL3C-Y

5MP IR Network Dome Camera



- Features:
- 1/2.9" 5MP PS CMOS Image Sensor
  - Max. 5MP(2880 × 1620)@20fps
  - Instastream, H.265 and Smart H.264+ dual-stream encoding
  - DWDR, Day/Night (ICR), 3D-DNR, ROI, AWB, AGC, BLC, HLC
  - 3.6mm fixed lens
  - IR Range of 30 Mtrs, IP67, PoE
  - Support Built-in Mic
  - Mobile Software: iCMOB, gCMOB, CMS Software: KVMS Pro Lite

### CP-UNC-TA51PL3C-Y

5MP IR Network Bullet Camera



- Features:
- 1/2.9" 5MP PS CMOS Image Sensor
  - Max. 5MP(2880 × 1620)@20fps
  - Instastream, H.265 and Smart H.264+ dual-stream encoding
  - DWDR, Day/Night (ICR), 3D-DNR, ROI, AWB, AGC, BLC, HLC
  - 3.6mm fixed lens
  - IR Range of 30 Mtrs, IP67, PoE
  - Support Built-in Mic
  - Mobile Software: iCMOB, gCMOB, CMS Software: KVMS Pro Lite

## 2 MP Guard + Series

### CP-UNC-DA21PL3-GP-Y

2MP Full-Color Guard+ Network Dome Camera



- Features:
- 1/3.2" 2MP PS CMOS Image Sensor
  - Max. 2MP (1920 × 1080) @25/30fps
  - Instastream, H.265 and Smart H.264+ dual-stream encoding
  - DWDR, 3D-DNR, ROI, AWB, AGC, BLC, HLC
  - 3.6mm fixed lens
  - Built-in warm light, Illumination Range of 30 Mtrs, IP67, PoE
  - Mobile Software: iCMOB, gCMOB, CMS Software: KVMS Pro Lite

### CP-UNC-TA21PL3-GP-Y

2MP Full-Color Guard+ Network Bullet Camera



- Features:
- 1/3.2" 2MP PS CMOS Image Sensor
  - Max. 2MP (1920 × 1080) @25/30fps
  - Instastream, H.265 and Smart H.264+ dual-stream encoding
  - DWDR, 3D-DNR, ROI, AWB, AGC, BLC, HLC
  - 3.6mm fixed lens
  - Built-in warm light, Illumination Range of 30 Mtrs, IP67, PoE
  - Mobile Software: iCMOB, gCMOB, CMS Software: KVMS Pro Lite

# Night-Time Vision, Daytime Detail

# illumiMax

Dual Light



Built-in-Mic



Smart Motion Detection



Instastream



DWDR

ONVIF

ONVIF support



Dual light night vision - in  
warm light (color) & IR (B&W)

## Gold Series

### CP-UNC-DA21L3C-L

2MP Dual Light Dome Camera



- Features:
- 1/2.8" 2MP PS CMOS Image Sensor
  - Max. 2MP (1920 × 1080) @25/30fps
  - Instastream, H.265 and Smart H.264+ dual-stream encoding
  - DWDR, 3D-DNR, ROI, AWB, AGC, BLC, HLC
  - 3.6mm fixed lens
  - IR Range of 30 Mtr., Warm Light Range of 30 Mtrs, IP67, PoE, Support Built-in Mic
  - Mobile Software: iCMOB, gCMOB, CMS Software: KVMS Pro Lite

### CP-UNC-DA41L3C-L

4MP Dual Light Dome Camera



- Features:
- 1/2.9" 4MP PS CMOS Image Sensor
  - Max. 4MP (2560x1440) @25/30fps
  - Instastream, H.265 and Smart H.264+ dual-stream encoding
  - DWDR, 3D-DNR, ROI, AWB, AGC, BLC, HLC
  - 3.6mm fixed lens
  - IR Range of 30 Mtr., Warm Light Range of 30 Mtrs, IP67, PoE, Support Built-in Mic
  - Mobile Software: iCMOB, gCMOB, CMS Software: KVMS Pro Lite

### CP-UNC-TA21L3C-L

2MP Dual Light Bullet Camera



- Features:
- 1/2.8" 2MP PS CMOS Image Sensor
  - Max. 2MP (1920 × 1080) @25/30fps
  - Instastream, H.265 and Smart H.264+ dual-stream encoding
  - DWDR, 3D-DNR, ROI, AWB, AGC, BLC, HLC
  - 3.6mm fixed lens
  - IR Range of 30 Mtr., Warm Light Range of 30 Mtrs, IP67, PoE, Support Built-in Mic
  - Mobile Software: iCMOB, gCMOB, CMS Software: KVMS Pro Lite

### CP-UNC-TA41L3C-L

4MP Dual Light Bullet Camera



- Features:
- 1/2.9" 4MP PS CMOS Image Sensor
  - Max. 4MP (2560x1440) @25/30fps
  - Instastream, H.265 and Smart H.264+ dual-stream encoding
  - DWDR, 3D-DNR, ROI, AWB, AGC, BLC, HLC
  - 3.6mm fixed lens
  - IR Range of 30 Mtr., Warm Light Range of 30 Mtrs, IP67, PoE, Support Built-in Mic
  - Mobile Software: iCMOB, gCMOB, CMS Software: KVMS Pro Lite

## 2 MP Silver Series

### CP-UNC-DA21PL3C-LY

2MP Dual Light Dome Camera



- Features:
- 1/3.2" 2MP PS CMOS Image Sensor
  - Max. 2MP (1920 × 1080) @25/30fps
  - Instastream, H.265 and Smart H.264+ dual-stream encoding
  - DWDR, 3D-DNR, ROI, AWB, AGC, BLC, HLC
  - 3.6mm fixed lens
  - IR Range of 30 Mtr., Warm Light Range of 15 Mtrs, IP67, PoE, Support Built-in Mic
  - Mobile Software: iCMOB, gCMOB, CMS Software: KVMS Pro Lite

### CP-UNC-TA21PL3C-LY

2MP Dual Light Bullet Camera



- Features:
- 1/3.2" 2MP PS CMOS Image Sensor
  - Max. 2MP (1920 × 1080) @25/30fps
  - Instastream, H.265 and Smart H.264+ dual-stream encoding
  - DWDR, 3D-DNR, ROI, AWB, AGC, BLC, HLC
  - 3.6mm fixed lens
  - IR Range of 30 Mtr., Warm Light Range of 15 Mtrs, IP67, PoE, Support Built-in Mic
  - Mobile Software: iCMOB, gCMOB, CMS Software: KVMS Pro Lite

### CP-UNC-DA41PL3C-LY

4MP Dual Light Dome Camera



- Features:
- 1/3" 4MP PS CMOS Image Sensor
  - Max. 4MP (2560x1440) @25/30fps
  - Instastream, H.265 and Smart H.264+ dual-stream encoding
  - DWDR, 3D-DNR, ROI, AWB, AGC, BLC, HLC
  - 3.6mm fixed lens
  - IR Range of 30 Mtr., Warm Light Range of 15 Mtrs, IP67, PoE, Support Built-in Mic
  - Mobile Software: iCMOB, gCMOB, CMS Software: KVMS Pro Lite

### CP-UNC-TA41PL3C-LY

4MP Dual Light Bullet Camera



- Features:
- 1/3" 4MP PS CMOS Image Sensor
  - Max. 4MP (2560x1440) @25/30fps
  - Instastream, H.265 and Smart H.264+ dual-stream encoding
  - DWDR, 3D-DNR, ROI, AWB, AGC, BLC, HLC
  - 3.6mm fixed lens
  - IR Range of 30 Mtr., Warm Light Range of 15 Mtrs, IP67, PoE, Support Built-in Mic
  - Mobile Software: iCMOB, gCMOB, CMS Software: KVMS Pro Lite

## 5 MP Series

### CP-UNC-DA51PL3C-LY

5MP Dual Light Dome Camera



- Features:
- 1/2.9" 5MP PS CMOS Image Sensor
  - Max. 5MP (2880 x 1620) @25/30fps
  - Instastream, H.265 and Smart H.264+ dual-stream encoding
  - DWDR, 3D-DNR, ROI, AWB, AGC, BLC, HLC
  - 3.6mm fixed lens
  - IR Range of 30 Mtr., Warm Light Range of 30 Mtrs, IP67, PoE, Support Built-in Mic
  - Mobile Software: iCMOB, gCMOB, CMS Software: KVMS Pro Lite

### CP-UNC-TA51PL3C-LY

5MP Dual Light Bullet Camera



- Features:
- 1/2.9" 5MP PS CMOS Image Sensor
  - Max. 5MP (2880 x 1620) @25/30fps
  - Instastream, H.265 and Smart H.264+ dual-stream encoding
  - DWDR, 3D-DNR, ROI, AWB, AGC, BLC, HLC
  - 3.6mm fixed lens
  - IR Range of 30 Mtr., Warm Light Range of 30 Mtrs, IP67, PoE, Support Built-in Mic
  - Mobile Software: iCMOB, gCMOB, CMS Software: KVMS Pro Lite

## 2.4 MP HD Series

### CP-UNC-DC21L3C-L

2.4MP Dual Light Dome Camera



- Features:
- 1/3.2" 2.4MP PS CMOS Image Sensor
  - Max. 2.4MP@25/30fps
  - Instastream, H.265 and Smart H.264+ dual-stream encoding
  - DWDR, Day/Night (ICR), 2D DNR, BLC, HLC
  - 3.6mm fixed lens
  - IR Range of 30 Mtr., Warm Light Range of 20 Mtrs, Support Built-in Mic

### CP-URC-TC24PL3C-L

2.4MP Dual Light Bullet Camera



- Features:
- 1/3.2" 2.4MP PS CMOS Image Sensor
  - Max. 2.4MP@25/30fps
  - Instastream, H.265 and Smart H.264+ dual-stream encoding
  - DWDR, Day/Night (ICR), 2D DNR, BLC, HLC
  - 3.6mm fixed lens
  - IR Range of 30 Mtr., Warm Light Range of 20 Mtrs, Support Built-in Mic

## 5 MP HD Series

### CP-USC-TA24L2C-L

2.4MP Dual Light Bullet Camera



- Features:
- 2.4MP PS CMOS Image Sensor
  - Max. 2.4MP@25/30fps
  - Instastream, H.265 and Smart H.264+ dual-stream encoding
  - DWDR, Day/Night (ICR), 3D DNR, BLC, HLC
  - 3.6mm fixed lens
  - IR Range of 20 Mtr., Warm Light Range of 20 Mtrs, IP67, Support Built-in Mic

### CP-USC-TA50L2C-L

5MP Dual Light Bullet Camera



- Features:
- 5MP PS CMOS Image Sensor
  - Max. 5MP@25/30fps
  - Instastream, H.265 and Smart H.264+ dual-stream encoding
  - DWDR, Day/Night (ICR), 2D DNR, BLC, HLC
  - 3.6mm fixed lens
  - IR Range of 20 Mtr., Warm Light Range of 20 Mtrs, IP68, Support Built-in Mic

### CP-URC-DC51PL3C-L

5MP Dual Light Dome Camera



- Features:
- 5MP PS CMOS Image Sensor
  - Max. 5MP@25/30fps
  - Instastream, H.265 and Smart H.264+ dual-stream encoding
  - DWDR, Day/Night (ICR), 2D DNR, BLC, HLC
  - 3.6mm fixed lens
  - IR Range of 30 Mtr., Warm Light Range of 20 Mtrs, IP69, Support Built-in Mic

### CP-URC-TC51PL3C-L

5MP Dual Light Bullet Camera



- Features:
- 5MP PS CMOS Image Sensor
  - Max. 5MP@25/30fps
  - Instastream, H.265 and Smart H.264+ dual-stream encoding
  - DWDR, Day/Night (ICR), 2D DNR, BLC, HLC
  - 3.6mm fixed lens
  - IR Range of 30 Mtr., Warm Light Range of 20 Mtrs, IP70, Support Built-in Mic

# CP PLUS Intelligent IP Solution



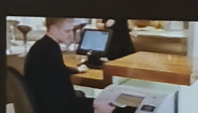
## Applications



Reception Area



Lobby Area



Cash Counter



Classroom



## 2 MP Distribution Series

### CP-UNC-DA21PL3C-V3

2MP IR Network Dome Camera



- Features:
- 1/2.8" 2MP PS CMOS Image Sensor
  - Max. 2MP (1920 × 1080) @25/30fps
  - Instastream and H.265 dual-stream encoding
  - DWDR, Day/Night (ICR), 3D-DNR, ROI, AWB, AGC, BLC, HLC
  - 3.6mm fixed lens (2.8mm Optional)
  - IR Range of 30 Mtrs, IP67, PoE
  - Support Built-in Mic
  - Mobile Software: iCMOB, gCMOB, CMS Software: KVMS Pro Lite

### CP-UNC-DA21ZPL4-M

2MP IR Network Dome Camera



- Features:
- 1/2.7" 2MP PS CMOS Image Sensor
  - Max. 2MP (1920 × 1080) @25/30fps
  - Instastream and H.264+ dual-stream encoding
  - DWDR, Day/Night (ICR), 3D-DNR, ROI, AWB, AGC, BLC, HLC
  - 2.8mm~12mm Motorized Lens
  - IR Range of 40 Mtrs, IP67, Micro SD Card, PoE
  - Mobile Software: iCMOB, gCMOB, CMS Software: KVMS Pro Lite

### CP-UNC-DA21L3C-Q

2MP IR Network Dome Camera



- Features:
- 1/2.8" 2MP PS CMOS Image Sensor
  - Max. 2MP (1920 × 1080) @25/30fps
  - Instastream and H.264+ dual-stream encoding
  - DWDR, Day/Night (ICR), 3D-DNR, ROI, AWB, AGC, BLC, HLC
  - 3.6mm fixed lens (2.8mm optional)
  - Support Built-in Mic
  - IR Range of 30 Mtrs, IP67
  - Mobile Software: iCMOB, gCMOB, CMS Software: KVMS Pro Lite

### CP-UNC-DB21L3C-MD

2MP IR Network Dome Camera



- Features:
- 1/2.7" 2MP PS CMOS Image Sensor
  - Max. 2MP (1920 × 1080) @25/30fps
  - Instastream, H.265 and H.264+ Dual-stream encoding
  - WDR(120dB), 3D-DNR, ROI, AWB, AGC, HLC, BLC
  - 3.6mm fixed lens (2.8mm optional)
  - IR Range of 30 Mtrs, IP67, Micro SD Card, PoE
  - Support Built-in Mic
  - Mobile Software: iCMOB, gCMOB, CMS Software: KVMS Pro Lite

### CP-UNC-TA21L5C-V/TA21L8C-V

2MP IR Network Bullet Camera



- Features:
- 1/2.8" 2MP CMOS Image Sensor
  - Max. 2MP (1920 × 1080) @25/30fps
  - Instastream, H.265 and H.264+ Dual-stream encoding
  - DWDR, 3D-DNR, ROI, AWB, AGC, HLC, BLC
  - 3.6mm fixed lens (6mm, 8mm optional)
  - IR Range of 50/80 Mtrs, IP67, PoE
  - Support Built-in Mic
  - Mobile Software: iCMOB, gCMOB, CMS Software: KVMS Pro Lite

### CP-UNC-TA21PL3-V3

2MP IR Network Bullet Camera



- Features:
- 1/2.8" 2MP PS CMOS Image Sensor
  - Max. 2MP (1920 × 1080) @25/30fps
  - Instastream and H.264+ dual-stream encoding
  - DWDR, Day/Night (ICR), 3D-DNR, ROI, AWB, AGC, BLC, HLC
  - 3.6mm fixed lens (2.8mm Optional)
  - IR Range of 30 Mtrs, IP67, PoE
  - Mobile Software: iCMOB, gCMOB, CMS Software: KVMS Pro Lite

### CP-UNC-TA21PL3C-V3

2MP IR Network Bullet Camera



- Features:
- 1/2.8" 2MP PS CMOS Image Sensor
  - Max. 2MP (1920 × 1080) @25/30fps
  - Instastream and H.264+ dual-stream encoding
  - DWDR, Day/Night (ICR), 3D-DNR, ROI, AWB, AGC, BLC, HLC
  - 3.6mm fixed lens (2.8mm Optional)
  - IR Range of 30 Mtrs, IP67, PoE
  - Support Built-in Mic

### CP-UNC-TA21ZPL5-M

2MP IR Network Bullet Camera



- Features:
- 1/2.8" 2MP CMOS Image Sensor
  - Max. 2MP (1920 × 1080) @25/30fps
  - Instastream and H.264+ dual-stream encoding
  - DWDR, Day/Night (ICR), 3D-DNR, ROI, AWB, AGC, BLC, HLC
  - 2.8mm~12mm Motorized Lens
  - IR Range of 50 Mtrs, IP67, Micro SD Card, PoE
  - Mobile Software: iCMOB, gCMOB, CMS Software: KVMS Pro Lite

### CP-UNC-TA21L3C-Q

2MP IR Network Bullet Camera



- Features:
- 1/2.8" 2MP PS CMOS Image Sensor
  - Max. 2MP (1920 × 1080) @25/30fps
  - Instastream and H.264+ dual-stream encoding
  - DWDR, Day/Night (ICR), 3D-DNR, ROI, AWB, AGC, BLC, HLC
  - 3.6mm fixed lens (2.8mm optional)
  - Support Built-in Mic
  - IR Range of 30 Mtrs, IP67
  - Mobile Software: iCMOB, gCMOB, CMS Software: KVMS Pro Lite

### CP-UNC-TB21L3C-MDS

2MP IR Network Bullet Camera



- Features:
- 1/2.8" 2MP CMOS Image Sensor
  - Max. 2MP (1920 × 1080) @25/30fps
  - Instastream, H.265 & H.264+ triple-stream encoding
  - WDR(120dB), Day/Night(ICR), 3D-DNR, Defog, ROI, AWB, AGC, BLC, HLC
  - 3.6mm fixed lens (2.8mm optional)
  - IR Range of 30 Mtrs, IP67, Micro SD Card, PoE
  - Support Built-in Mic
  - Mobile Software: iCMOB, gCMOB, CMS Software: KVMS Pro Lite

### CP-UNC-VB21L3C-S

2MP IR Network Vandal Dome Camera



- Features:
- 1/2.8" 2MP CMOS Image Sensor
  - Max. 2MP (1920 × 1080) @25/30fps
  - Instastream & H.264+ triple-stream encoding
  - WDR(120dB), Day/Night(ICR), 3D-DNR, Defog, ROI, AWB, AGC, BLC, HLC
  - 3.6mm fixed lens (2.8mm optional)
  - IR Range of 30 Mtrs, IP67, SD Card, PoE, IK10
  - Support Built-in Mic
  - Mobile Software: iCMOB, gCMOB, CMS Software: KVMS Pro Lite

## 4 MP Distribution Series

### CP-UNC-DA41PL3

4MP IR Network Dome Camera



- Features:
- 1/3" 4MP PS CMOS Image Sensor
  - Max. 4MP(2560 × 1440)@25/30 fps
  - Instastream and H.264 dual-stream encoding
  - DWDR, Day/Night(ICR), 3D-NR, ROI, AWB, AGC, BLC, HLC
  - 3.6mm fixed lens (2.8mm optional)
  - IR Range of 30 Mtrs, IP67
  - Mobile Software: iCMOB, gCMOB, CMS Software: KVMS Pro Lite

### CP-UNC-DA41PL3C

4MP IR Network Dome Camera



- Features:
- 1/3" 4MP PS CMOS Image Sensor
  - Max. 4MP(2560 × 1440)@25/30 fps
  - Instastream and H.264 dual-stream encoding
  - DWDR, Day/Night(ICR), 3D-NR, ROI, AWB, AGC, BLC, HLC
  - 3.6mm lens (2.8mm optional)
  - IR Range of 30 Mtrs, IP67, PoE
  - Support Built-in Mic
  - Mobile Software: iCMOB, gCMOB, CMS Software: KVMS Pro Lite

### CP-UNC-DA41ZPL4-MD

4MP IR Network Dome Camera



- Features:
- 1/3" 4MP PS CMOS Image Sensor
  - Max. 4MP(2560 × 1440)@25/30 fps
  - Instastream, H.265 Dual-stream encoding
  - WDR(120dB), Day/Night (ICR), 3D-NR, ROI, AWB, AGC, BLC, HLC
  - 2.8mm~12mm Motorized lens
  - IR Range of 40 Mtrs, IP67, Micro SD Card, PoE
  - Mobile Software: iCMOB, gCMOB, CMS Software: KVMS Pro Lite

### CP-UNC-DA41L3C-LQ

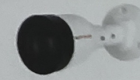
4MP Dual Light Network Dome Camera



- Features:
- 1/2.9" 4MP PS CMOS Image Sensor
  - Max. 4MP (2688 × 1520) @25 fps
  - Instastream/H.265/H.264+/H.264 Dual Stream Video Compression
  - DWDR, Day/Night (ICR), 3D-DNR, ROI, AWB, AGC, BLC, HLC
  - IR Range of 30 Mtr., Warm Light Range of 20 Mtrs., Support Built-in Mic
  - Mobile Software: iCMOB, gCMOB, CMS Software: KVMS Pro Lite

### CP-UNC-TA41PL3

4MP IR Network Bullet Camera



- Features:
- 1/3" 4MP PS CMOS Image Sensor
  - Max. 4MP(2560 × 1440)@25/30 fps
  - Instastream and H.264 dual-stream encoding
  - DWDR, Day/Night(ICR), 3D-NR, ROI, AWB, AGC, BLC, HLC
  - 3.6mm fixed lens (2.8mm optional)
  - IR Range of 30 Mtrs, IP67
  - Mobile Software: iCMOB, gCMOB, CMS Software: KVMS Pro Lite

### CP-UNC-TA41PL3C

4MP IR Network Bullet Camera



- Features:
- 1/3" 4MP PS CMOS Image Sensor
  - Max. 4MP(2560 × 1440)@25/30 fps
  - Instastream and H.264 dual-stream encoding
  - DWDR, Day/Night(ICR), 3D-NR, ROI, AWB, AGC, BLC, HLC
  - 3.6mm fixed lens (2.8mm optional)
  - IR Range of 30 Mtrs, IP67, PoE
  - Support Built-in Mic
  - Mobile Software: iCMOB, gCMOB, CMS Software: KVMS Pro Lite

### CP-UNC-TA41ZPL3-MD

4MP IR Network Bullet Camera



- Features:
- 1/3" 4MP PS CMOS Image Sensor
  - Max. 4MP(2560 × 1440)@25/30 fps
  - Instastream and H.264 dual-stream encoding
  - WDR(120dB), Day/Night(ICR), 3D-NR, ROI, AWB, AGC, BLC, HLC
  - 2.8mm~12mm Motorized lens
  - IR Range of 50 Mtrs, IP67, Micro SD Card, PoE
  - Mobile Software: iCMOB, gCMOB, CMS Software: KVMS Pro Lite

### CP-UNC-TA41L5C-D-V3

4MP IR Network Bullet Camera



- Features:
- 1/2.7" 4MP PS CMOS Image Sensor
  - Max. 4MP(2560 × 1440)@25/30 fps
  - Instastream/H.265/H.264+/H.264 triple Stream Video Compression
  - WDR(120dB), Day/Night (ICR), 3D-DNR, ROI, AWB, AGC, BLC, HLC
  - 3.6mm lens (6mm optional)
  - IR Range of 50 Mtrs, IP67, PoE
  - Support Built-in Mic
  - Mobile Software: iCMOB, gCMOB, CMS Software: KVMS Pro Lite

### CP-UNC-TB41L3C-MDS

4 MP IR Network Bullet Camera



- Features:
- 1/2.9" 4MP CMOS Image Sensor
  - Max. 4MP(2560 × 1440)@25/30 fps
  - Instastream & H.265 triple-stream encoding
  - WDR(120dB), Day/Night(ICR), 3D-NR, ROI, AWB, AGC, BLC, HLC
  - 3.6mm fixed lens (2.8mm optional)
  - IR Range of 30 Mtrs., IP67, Micro SD Card, PoE
  - Support Built-in Mic
  - Mobile Software: iCMOB, gCMOB, CMS Software: KVMS Pro Lite

### CP-UNC-TA41L3C-LQ

4MP Dual Light Network Bullet Camera



- Features:
- 1/2.9" 4MP PS CMOS Image Sensor
  - Max. 4MP (2688 × 1520) @25 fps
  - Instastream/H.265/H.264+/H.264 Dual Stream Video Compression
  - DWDR, Day/Night (ICR), 3D-DNR, ROI, AWB, AGC, BLC, HLC
  - IR Range of 30 Mtr., Warm Light Range of 20 Mtrs
  - Support Built-in Mic
  - Mobile Software: iCMOB, gCMOB, CMS Software: KVMS Pro Lite

### CP-UNC-TA41L8C-D-V3

4MP IR Network Bullet Camera



- Features:
- 1/2.7" 4MP PS CMOS Image Sensor
  - Max. 4MP(2560 × 1440)@25/30 fps
  - Instastream/H.265/H.264+/H.264 triple Stream Video Compression
  - WDR(120dB), Day/Night (ICR), 3D-DNR, ROI, AWB, AGC, BLC, HLC
  - 3.6mm lens (6mm, 8mm optional)
  - IR Range of 80 Mtrs, IP67, PoE
  - Support Built-in Mic
  - Mobile Software: iCMOB, gCMOB, CMS Software: KVMS Pro Lite

### CP-UNC-VB41L3C-MDS

4 MP IR Network Vandal Dome Camera



- Features:
- 1/3" 4MP CMOS Image Sensor
  - Max. 4MP(2560 × 1440)@25/30 fps
  - Instastream & H.265 triple-stream encoding
  - WDR(120dB), Day/Night(ICR), 3D-DNR, ROI, AWB, AGC, BLC, HLC
  - 3.6mm fixed lens (2.8mm optional)
  - IR Range of 30 Mtrs., IP67, Built-in IR LED, SD Card, PoE, IK10
  - Support Built-in Mic
  - Mobile Software: iCMOB, gCMOB, CMS Software: KVMS Pro Lite

### 5 MP Distribution Series

CP-UNC-DA51L3C

5MP IR Network Dome Camera



- Features:
- 1/2.7" 5MP PS CMOS Image Sensor
  - Max. 5MP(2688 × 1520)@25/30 fps
  - Instastream & H.265 dual-stream encoding
  - DWDR, Day/Night (ICR), 3D-DNR, ROI, AWB, AGC, BLC, HLC
  - 3.6mm lens (2.8mm optional)
  - IR Range of 30 Mtrs, IP67, PoE
  - Support Built-in Mic
  - Mobile Software: iCMOB, gCMOB, CMS Software: KVMS Pro Lite

### CP-UNC-TA51L3C

5MP IR Network Bullet Camera



- Features:
- 1/2.7" 5MP PS CMOS Image Sensor
  - Max. 5MP(2688 × 1520)@25/30 fps
  - Instastream & H.265 dual-stream encoding
  - DWDR, Day/Night (ICR), 3D-DNR, ROI, AWB, AGC, BLC, HLC
  - 3.6mm lens (2.8mm optional)
  - IR Range of 30 Mtrs, IP67, PoE
  - Support Built-in Mic
  - Mobile Software: iCMOB, gCMOB, CMS Software: KVMS Pro Lite

### CP-UNC-TB51L3C-MDS

5MP IR Network Bullet Camera



- Features:
- 1/2.7" 5MP CMOS Image Sensor
  - Max. 5MP(2688 × 1520)@25/30 fps
  - Instastream & H.265 dual-stream encoding
  - WDR(120dB), Day/Night(ICR), 3D-DNR, ROI, AGC, BLC, HLC
  - 3.6mm lens (2.8mm optional)
  - IR Range of 30 Mtrs, IP67, SD Card, PoE
  - Support Built-in Mic
  - Mobile Software: iCMOB, gCMOB, CMS Software: KVMS Pro Lite

### CP-UNC-EE61L2C-VMD-Q

6MP Panoramic Network IR Fisheye Camera



- Features:
- 1/2.5" 6MP CMOS Image Sensor
  - Max. 6MP (2560x2560)@25/30fps
  - Instastream & H.265 triple-stream encoding
  - WDR(120dB), Day/Night(ICR), 3D-DNR, ROI, AGC, BLC, HLC
  - 1.68mm Fixed
  - IR Range of 15m, IP67, IP10, SD Card
  - Support Built-in Mic
  - Mobile Software: iCMOB, gCMOB, CMS Software: KVMS Pro Lite

### CP-UNC-VB51L3C-MDS

5MP IR Network Vandal Dome Camera



- Features:
- 1/2.7" 5MP CMOS Image Sensor
  - Max. 5MP(2688 × 1520)@25/30 fps
  - Instastream & H.264+ Dual-stream encoding
  - WDR(120dB), Day/Night(ICR), 3D-DNR, ROI, AGC, BLC, HLC
  - 3.6mm lens (2.8mm optional)
  - IR Range of 30 Mtrs, IP67, SD Card, PoE, IK10
  - Support Built-in Mic
  - Mobile Software: iCMOB, gCMOB, CMS Software: KVMS Pro Lite

### 8 MP Distribution Series

#### CP-UNC-DA81L3C

8MP IR Network Dome Camera



- Features:
- 1/2.7" 8MP PS CMOS Image Sensor
  - Max. 8MP (3840 × 2160)@15fps
  - Instastream & H.265 dual-stream encoding
  - DWDR, Day/Night (ICR), 3D-DNR, ROI, AWB, AGC, BLC, HLC
  - 3.6mm lens (2.8mm optional)
  - IR Range of 30 Mtrs, IP67, PoE
  - Support Built-in Mic
  - Mobile Software: iCMOB, gCMOB, CMS Software: KVMS Pro Lite

#### CP-UNC-TA81L3C

8MP IR Network Bullet Camera



- Features:
- 1/2.7" 8MP PS CMOS Image Sensor
  - Max. 8MP (3840 × 2160)@15fps
  - Instastream & H.265 dual-stream encoding
  - DWDR, Day/Night (ICR), 3D-DNR, ROI, AWB, AGC, BLC, HLC
  - 3.6mm lens (2.8mm optional)
  - IR Range of 30 Mtrs, IP67, PoE
  - Support Built-in Mic
  - Mobile Software: iCMOB, gCMOB, CMS Software: KVMS Pro Lite

#### CP-UNC-TB81L3-MDS

8 MP IR Network Bullet Camera



- Features:
- 1/2.7" 8MP CMOS Image Sensor
  - Max. 8MP (3840 × 2160)@15fps
  - Instastream & H.264+ Dual-stream encoding
  - WDR(120dB), Day/Night(ICR), 3D-DNR, ROI, AGC, BLC, HLC
  - 3.6mm lens (2.8mm optional)
  - IR Range of 30 Mtrs, IP67, Micro SD Card, PoE
  - Support Starlight Function
  - Mobile Software: iCMOB, gCMOB, CMS Software: KVMS Pro Lite

#### CP-UNC-VB81L3-MDS

8 MP IR Network Vandal Dome Camera



- Features:
- 1/2.7" 8MP CMOS Image Sensor
  - Max. 8MP (3840 × 2160)@15fps
  - Instastream & H.264+ Dual-stream encoding
  - WDR(120dB), Day/Night(ICR), 3D-DNR, ROI, AGC, BLC, HLC
  - 3.6mm lens (2.8mm optional)
  - IR Range of 30 Mtrs, IP67, Micro SD Card, PoE, IK10
  - Support Starlight Function
  - Mobile Software: iCMOB, gCMOB, CMS Software: KVMS Pro Lite

## 2 MP Project Series

### CP-UNC-TB21ZL6C-VMDS

2MP Network IR Bullet Camera



- Features:**
- 1/2.8" 2MP PS CMOS Image Sensor
  - Max. 2MP (1920 × 1080) @25/30fps
  - Instastream, H.265, Smart H.264+, Dual stream encoding
  - WDR(120dB), Day/Night(ICR), 3D-DNR, ROI, AWB, AGC, BLC
  - 2.7mm~13.5mm Motorized Lens
  - IR Range of 60 Mtrs., Micro SD Card IP67, PoE
  - Support Built-in Mic
  - Mobile Software: iCMOB, gCMOB, CMS Software: KVMS Pro Lite

### CP-UNC-TC21L5C-VMDS

2MP IR Network Bullet Camera



- Features:**
- 1/2.8" 2MP CMOS Image Sensor
  - Max. 2MP (1920 × 1080) @25/30fps
  - Instastream & H.265 triple-stream encoding
  - WDR(120dB), Day/Night(ICR), 3D-DNR, ROI, AWB, AGC, BLC, HLC
  - 3.6mm lens (2.8mm optional)
  - IR Range of 50 Mtrs., IP67, PoE, SD Card, Built-in Mic
  - Support Built-in Mic
  - Mobile Software: iCMOB, gCMOB, CMS Software: KVMS Pro Lite

### CP-UNC-TC21ZL6C-VMDS

2MP Network IR Bullet Camera



- Features:**
- 1/2.8" 2MP PS CMOS Image Sensor
  - Max. 2MP (1920 × 1080) @25/30fps
  - Instastream and H.264+ triple-stream encoding
  - WDR(120dB), Day/Night (ICR), EIS, Defog, 3D-DNR, ROI, AWB, AGC, BLC, HLC
  - 2.7mm~13.5mm Motorized Lens
  - IR Range of 60 Mtrs., Micro SD Card, IP67, IK10(optional), PoE
  - Support Built-in Mic
  - Mobile Software: iCMOB, gCMOB, CMS Software: KVMS Pro Lite

### CP-UNC-TE21ZL12T-VMDS

2MP IR Network Bullet Camera



- Features:**
- 1/2.8" 2MP CMOS Image Sensor
  - Max. 2MP (1920 × 1080) @25/30fps
  - Instastream & H.265 triple-stream encoding
  - WDR(120dB), Day/Night(ICR), 3D-DNR, ROI, AWB, AGC, BLC, HLC
  - 2.7mm~13.5mm Motorized Lens
  - IR Range of 120 Mtrs, IP67, SD Card, PoE
  - Support Built-in Mic
  - Mobile Software: iCMOB, gCMOB, CMS Software: KVMS Pro Lite

### CP-UNC-TE21ZL6C-VMDS-Q

2MP IR Network Bullet Camera



- Features:**
- 1/2.8" 2MP PS CMOS Image Sensor
  - Max. 2MP (1920 × 1080) @25/30 fps
  - Instastream & H.265 quad-stream encoding
  - WDR(120dB), Day/Night(ICR), 3D-DNR, ROI, AGC, BLC, HLC
  - 2.7mm~13.5mm Motorized Lens
  - IR Range of 60 Mtrs, IP67, SD Card, PoE
  - Support Built-in Mic
  - Mobile Software: iCMOB, gCMOB, CMS Software: KVMS Pro Lite

### CP-UNC-VE21ZL4C-VMDS-Q

2MP IR Network Vandal Dome Camera



- Features:**
- 1/2.7" 2MP CMOS Image Sensor
  - Max. 2MP (1920 × 1080) @25/30 fps
  - Instastream & H.265 quad-stream encoding
  - WDR(120dB), Day/Night(ICR), 3D-DNR, ROI, AGC, BLC, HLC
  - 2.7mm~13.5mm Motorized Lens
  - IR Range of 40 Mtrs, IP67, IK10, SD Card, PoE
  - Support Built-in Mic
  - Mobile Software: iCMOB, gCMOB, CMS Software: KVMS Pro Lite

### CP-UNC-VE21L5T-VMDS

2MP IR Network Vandal Dome Camera



- Features:**
- 1/2.8" 2MP CMOS Image Sensor
  - Max. 2MP (1920 × 1080) @25/30fps
  - Instastream and H.264+ triple-stream encoding
  - WDR(120dB), Day/Night(ICR), 3D-DNR, ROI, AWB, AGC, BLC, HLC
  - 3.6mm fixed lens (6mm, 8mm, 12mm optional)
  - IR Range of 50 Mtrs, IP67, IK10(Optional), SD Card, PoE
  - Support Starlight Function
  - Mobile Software: iCMOB, gCMOB, CMS Software: KVMS Pro Lite

### CP-UNC-VB21ZL4C-VMDS

2MP IR Network Vandal Dome Camera



- Features:**
- 1/2.8" 2MP CMOS Image Sensor
  - Max. 2MP (1920 × 1080) @25/30fps
  - Instastream, H.265 and H.264+ triple-stream encoding
  - WDR(120dB), Day/Night (ICR), 3D-DNR, ROI, AWB, AGC, BLC, HLC
  - 2.7mm~12mm motorized lens
  - IR Range of 40Mtrs., Micro SD Card, IP67, IK10
  - Support Built-in Mic
  - Mobile Software: iCMOB, gCMOB, CMS Software: KVMS Pro Lite

### CP-UNC-VC21ZL4C-MDS-V2

2 MP IR Network Vandal Dome Camera



- Features:**
- 1/2.8" 2MP CMOS Image Sensor
  - Max. 2MP (1920 × 1080) @25/30fps
  - Instastream, H.265 and H.264+ triple-stream encoding
  - WDR(120dB), Day/Night(ICR), 3D-DNR, ROI, AWB, AGC, BLC, HLC
  - 2.7mm~12mm motorized lens
  - IR Range of 40 Mtrs, IP67, SD Card, PoE, IK10
  - Support Built-in Mic
  - Mobile Software: iCMOB, gCMOB, CMS Software: KVMS Pro Lite

### CP-UNC-WD21L2-VMD

2MP IR Network Wedge Camera



- Features:**
- 1/2.8" 2MP PS CMOS Image Sensor
  - Max. 2MP (1920 × 1080) @25/30fps
  - Instastream, H.265 and H.264+ Triple-Stream encoding
  - WDR (120dB), Day/Night (ICR), 3D-NR, ROI, AWB, AGC, BLC
  - Support Built-in Mic
  - 3.6mm fixed lens (2.8mm optional)
  - IR Range of 30 Mtrs., IP67, IK10, PoE
  - Mobile Software: iCMOB, gCMOB, CMS Software: KVMS Pro Lite

### CP-UNC-TT41L3-VMDS

4 MP Dual Light Network Bullet Camera



- Features:**
- 1/1.8" 4 MP starlight CMOS sensor
  - Max. 4MP (2688 × 1520) @25 fps
  - H.265 & H.264 dual-stream encoding
  - WDR(120dB), Day/Night(ICR), 3D-DNR, ROI, AGC, BLC, HLC
  - 10mm~50mm Motorized Lens
  - IR Range of 30 Mtrs, IP67, SD Card, PoE
  - Mobile Software: iCMOB, gCMOB, CMS Software: KVMS Pro Lite

### CP-UNC-TT41L3-VMDS

4MP IR AI ANPR Camera



- Features:**
- 1/1.8" 4MP PS CMOS Image Sensor
  - H.265 and H.264 dual Encoding
  - Max. 4MP (2688 × 1520) @25fps
  - 8mm~32mm Motorized Lens
  - Detects intrusion and loitering, triggers light and voice alarms, and supports custom audio
  - The maximum IR Range of 30 Mtrs. Built in Mic, Micro SD, IP67, IK10
  - Mobile Software: iCMOB, gCMOB, CMS Software: KVMS Pro Lite

## 4 MP Project Series

### CP-UNC-DB41L5C-MDGP

4MP Full Color Network Dome Camera



- Features:**
- 1/2.9" 4MP CMOS Image Sensor
  - Max. 4MP (2688 × 1520) @20fps
  - Instastream, H.265, H.264 Dual-stream Encoding
  - Illumination Range of 50Mtrs.
  - Support Built-in Mic, SD card, IP67, PoE
  - Mobile Software: iCMOB, gCMOB, CMS Software: KVMS Pro Lite

### CP-UNC-TC41L5C-VMD-LQ

4MP Dual Light Network Bullet Camera



- Features:**
- 1/2.9" 4MP Progressive CMOS Image Sensor
  - Max. 4MP (2688 × 1520) @25/30fps
  - Instastream, H.265 and H.264+ quad-stream encoding
  - WDR(120dB), Day/Night(ICR), 3D-DNR, ROI, AWB, AGC, BLC, HLC
  - 3.6mm fixed lens (2.8mm, 6mm optional)
  - IR Range of 50 Mtrs, IP67, SD Card, PoE
  - Support Built-in Mic
  - Mobile Software: iCMOB, gCMOB, CMS Software: KVMS Pro Lite

### CP-UNC-TB41L5C-MDGP

4MP Smart Dual Light Network Camera



- Features:**
- 1/2.9" 4MP CMOS Image sensor
  - Max. 4 MP (2688 × 1520) @20 fps
  - Instastream & H.265 dual-stream encoding
  - Max. Illumination Range of 50 Mtrs.
  - Rotation mode, WDR, 3D NR, HLC, BLC, digital watermarking
  - Intelligent monitoring: Intrusion, tripwire
  - Support max. 256 G Micro SD card; built-in Mic; built-in speaker; two-way talk. IP67
  - Mobile Software: iCMOB, gCMOB, CMS Software: KVMS Pro Lite

### CP-UNC-TB41ZL6C-VMDS

4MP IR Network Bullet Camera



- Features:**
- 1/2.9" 4MP Progressive CMOS Image Sensor
  - Max. 4 MP (2688 × 1520) @20 fps, 2560 × 1440 @25/30 fps
  - Instastream, Smart H.264, Dual stream encoding
  - WDR(120dB), Day/Night(ICR), 3D-DNR, ROI, AWB, AGC, BLC
  - 2.7mm~13.5mm Motorized Lens
  - IR Range of 60 Mtrs., IP67, SD Card, PoE
  - Support Built-in Mic
  - Mobile Software: iCMOB, gCMOB, CMS Software: KVMS Pro Lite

## CP-UNC-TC41L5C-VMDS-V2

4MP IR Network Bullet Camera



- Features:**
- 1/2.9" 4MP Progressive CMOS Image Sensor
  - Max. 4MP (2688 × 1520)@25/30 fps
  - Instastream & H.265 triple-stream encoding
  - WDR(120dB), Day/Night(ICR), 3D-DNR, ROI, AWB, AGC, BLC, HLC
  - 3.6mm fixed lens (2.8mm, 6mm optional)
  - IR Range of 50 Mtrs., IP67, SD Card, PoE, Built-in Mic
  - Support Built-in Mic
  - Mobile Software: iCMOB, gCMOB, CMS Software: KVMS Pro Lite

## CP-UNC-TC41L6C-VM-D-LQ

4MP Dual Light Network Bullet Camera



- Features:**
- 1/2.9" 4MP Progressive CMOS Image Sensor
  - Max. 4MP (2688 × 1520)@25/30fps
  - Instastream, H.265 and H.264+ quad-stream encoding
  - WDR(120dB), Day/Night(ICR), 3D-DNR, ROI, AWB, AGC, BLC, HLC
  - 2.7mm~13.5mm Motorized Lens
  - IR Range of 60 Mtrs., IP67, SD Card, PoE
  - Support Built-in Mic
  - Mobile Software: iCMOB, gCMOB, CMS Software: KVMS Pro Lite

## CP-UNC-VB41ZL4-VMDS

4MP IR Network Vandal Dome Camera



- Features:**
- 1/3" 4MP CMOS Image Sensor
  - Max. 4MP (2688 × 1520)@25/30fps
  - Instastream & H.265 triple-stream encoding
  - WDR(120dB), Day/Night(ICR), 3D-DNR, ROI, AWB, AGC, BLC, HLC
  - 2.7mm~13.5mm Motorized Lens
  - IR Range of 40 Mtrs., IP67, PoE, SD Card, IK10
  - Support Starlight Function
  - Mobile Software: iCMOB, gCMOB, CMS Software: KVMS Pro Lite

## CP-UNC-VB41ZL4C-VMDS

4MP IR Network Vandal Dome Camera



- Features:**
- 1/2.9" 4MP PS CMOS Image Sensor
  - Max. 4MP(2560 × 1440)@25/30 fps
  - Instastream, Smart H.264, Dual stream encoding
  - WDR(120dB), Day/Night (ICR), 3D-DNR, ROI, AWB, AGC, BLC
  - 2.7mm~13.5mm Motorized Lens
  - IR Range of 40 Mtrs., IP67, PoE, SD Card, IK10
  - Support Built-in Mic
  - Support Starlight Function
  - Mobile Software: iCMOB, gCMOB, CMS Software: KVMS Pro Lite

### 5 MP Project Series

## CP-UNC-VC41ZL4C-VMDS-V2

4MP IR Network Vandal Dome Camera



- Features:**
- 1/3" 4MP PS CMOS Image Sensor
  - Max. 4MP (2688 × 1520)@25/30fps
  - AI Instastream, Instastream, H.265 and H.264, triple-stream encoding
  - WDR(120dB), Day/Night (ICR), SMD 4.0, 3D-DNR, ROI, AWB, AGC, BLC, HLC, EIS
  - 2.7mm~13.5mm Motorized Lens
  - IR Range of 40 Mtrs., Micro SD Card, IP67, PoE, IK10
  - Support Built-in Mic
  - Mobile Software: iCMOB, gCMOB, CMS Software: KVMS Pro Lite

## CP-UNC-BE51E-VM-D-Q

5MP WDR IR Network Box Camera



- Features:**
- 1/2.8" 5MP PS CMOS Image Sensor
  - Max. 5MP (2960×1668) @25/30 fps
  - Instastream & H.265 quad-stream encoding
  - WDR(120dB), Day/Night(ICR), 3D-DNR, ROI, AGC, BLC, HLC
  - C/CS Mount Lens
  - Support Micro SD Card, Built-in Mic, PoE
  - Mobile Software: iCMOB, gCMOB, CMS Software: KVMS Pro Lite

## CP-UNC-TB51ZL6C-VMDS

5 MP IR Network Bullet Camera



- Features:**
- 1/2.7" 5MP CMOS Image Sensor
  - Max. 5MP (2960×1668)@20fps
  - Instastream & H.265 triple-stream encoding
  - WDR(120dB), Day/Night(ICR), 3D-DNR, ROI, AGC, BLC, HLC
  - 2.7mm~13.5mm Motorized Lens
  - IR Range of 60 Mtrs, IP67, SD Card, PoE
  - Support Built-in Mic
  - Support Starlight Function
  - Mobile Software: iCMOB, gCMOB, CMS Software: KVMS Pro Lite

## CP-UNC-TCS1L5C-VMDS-V2

5 MP IR Network Bullet Camera



- Features:**
- 1/2.7" 5MP CMOS Image Sensor
  - Max. 5MP (2960×1668)@20fps
  - Instastream & H.265 triple-stream encoding
  - WDR(120dB), Day/Night(ICR), 3D-DNR, ROI, AGC, BLC, HLC
  - 3.6mm fixed lens (2.8mm, 6mm optional)
  - IR Range of 50 Mtrs, IP67, SD Card, PoE
  - Support Built-in Mic
  - Support Starlight Function
  - Mobile Software: iCMOB, gCMOB, CMS Software: KVMS Pro Lite

## CP-UNC-TCS1ZL6C-VMDS-V2

5 MP IR Network Bullet Camera



- Features:**
- 1/2.7" 5MP PS CMOS Image Sensor
  - Max. 5MP (2960×1668)@20fps
  - AI Instastream, Instastream and H.265 triple-stream encoding
  - WDR(120dB), Day/Night (ICR), 3D-DNR, EIS, Defog, ROI, AWB, AGC, BLC, HLC
  - 2.7mm~13.5mm Motorized Lens
  - IR Range of 60 Mtrs., IP67, SD Card, PoE
  - Support Built-in Mic
  - Mobile Software: iCMOB, gCMOB, CMS Software: KVMS Pro Lite

## CP-UNC-VB51ZL4C-VMDS

5 MP IR Network Vandal Dome Camera



- Features:**
- 1/2.7" 5MP CMOS Image Sensor
  - Max. 5MP (2960×1668)@20fps
  - Instastream & H.265 Dual-stream encoding
  - WDR(120dB), Day/Night (ICR), 3D-DNR, EIS, Defog, ROI, AWB, AGC, BLC, HLC
  - 2.7mm~13.5mm Motorized Lens
  - IR Range of 40 Mtrs, IP67, SD Card, PoE, IK10
  - Support Built-in Mic
  - Mobile Software: iCMOB, gCMOB, CMS Software: KVMS Pro Lite

## CP-UNC-VCS1ZL4C-VMDS-V2

5 MP IR Network Vandal Dome Camera



- Features:**
- 1/2.7" 5MP PS CMOS Image Sensor
  - Max. 5MP (2960×1668)@20fps
  - AI Instastream, Instastream and H.265 triple-stream encoding
  - WDR(120dB), Day/Night (ICR), 3D-DNR, EIS, Defog, ROI, AWB, AGC, BLC, HLC
  - 2.7mm~13.5mm Motorized Lens
  - IR Range of 40 Mtrs, IP67, SD Card, PoE, IK10
  - Support Built-in Mic
  - Mobile Software: iCMOB, gCMOB, CMS Software: KVMS Pro Lite

## CP-UNC-VCS1L5C-VMDS-V2

5 MP IR Network Vandal Dome Camera



- Features:**
- 1/2.7" 5MP PS CMOS Image Sensor
  - Max. 5MP (2960×1668)@20fps
  - Instastream & H.265 triple-stream encoding
  - WDR(120dB), Day/Night (ICR), 3D-DNR, EIS, Defog, ROI, AWB, AGC, BLC, HLC
  - 2.8mm fixed lens (3.6mm optional)
  - IR Range of 50 Mtrs, IP67, SD Card, PoE, IK10
  - Support Built-in Mic
  - Mobile Software: iCMOB, gCMOB, CMS Software: KVMS Pro Lite

### 8 MP Project Series

## CP-UNC-VB81ZL4C-VMDS

8 MP IR Network Vandal Dome Camera



- Features:**
- 1/2.7" 8MP CMOS Image Sensor
  - Max. 8MP (3840 × 2160)@15fps
  - Instastream & H.265 triple-stream encoding
  - WDR(120dB), Day/Night(ICR), 3D-DNR, ROI, AGC, BLC, HLC
  - 2.7mm~13.5mm Motorized Lens
  - IR Range of 40 Mtrs, IP67, SD Card, PoE, IK10
  - Support Built-in Mic
  - Mobile Software: iCMOB, gCMOB, CMS Software: KVMS Pro Lite

## CP-UNC-PC81L2B-VMZ-L

2x4MP Duo Splicing Fixed-focal Network Dome Camera



- Features:**
- Outputs 180° wide angle splicing image.
  - Outputs max. 8 MP (4096 × 1860)@20 fps
  - Illumination Range of 25 Mtrs.
  - ROI, Instastream, H.264/H.265, flexible coding, applicable to various bandwidth and storage environments
  - WDR, 3D NR, HLC, BLC, digital watermarking, applicable to various monitoring scenes
  - Mobile Software: iCMOB, gCMOB, CMS Software: KVMS Pro Lite

## CP-UNC-RC81L3C-VM-D-Z

2x4MP Dual lens + Panoramic Network Bullet Camera



- Features:**
- Dual 1/2.7" PS CMOS Image Sensor (0.9407 centimeters)
  - Max. Outputs 8MP (4096 × 1860)@20 fps
  - AI Instastream, H.264/H.265 triple-stream encoding
  - WDR, Day/Night(ICR), 3D-NR, ROI, AWB, AGC, BLC, HLC
  - IR Range of 30 Mtrs., Warm Range of 20 Mtr., SD Card, IP67
  - Mobile Software: iCMOB, gCMOB, CMS Software: KVMS Pro

## CP-UNC-TB81ZL6C-VMDS-V2

8 MP IR Network Bullet Camera



- Features:**
- 1/2.7" 8MP CMOS Image Sensor
  - Max. 8MP (3840 × 2160)@15fps
  - Instastream & H.265 triple-stream encoding
  - WDR(120dB), Day/Night(ICR), 3D-DNR, ROI, AGC, BLC, HLC
  - 2.7mm~13.5mm Motorized Lens
  - IR Range of 60 Mtrs, IP67, SD Card, PoE
  - Support Built-in Mic
  - Mobile Software: iCMOB, gCMOB, CMS Software: KVMS Pro Lite

## CP-UNC-TE81ZL6C-VMDS-Q

8MP IR Network Bullet Camera



- Features:**
- 1/2.7" 8MP PS CMOS Image Sensor
  - Max. 8MP (3840×2160) @25/30 fps
  - Instastream & H.265 quad-stream encoding
  - WDR(120dB), Day/Night(ICR), 3D-DNR, ROI, AGC, BLC,HLC
  - 2.7mm~13.5mm Motorized Lens
  - IR Range of 60 Mtrs, IP67, SD Card, PoE
  - Support Built-in Mic
  - Mobile Software: iCMOB, gCMOB, CMS Software: KVMS Pro Lite

### 2 MP PTZ Project Series

## CP-UNP-D2521L10-DN

2MP 25x Network IR PTZ Camera



- Features:**
- 1/2.8" 2MP CMOS Image sensor
  - Max. 2MP (1920 × 1080) @25/30fps
  - H.265; Smart H.264+; H.264B; H.264M; H.264H;
  - WDR(120dB), 2D/3D-DNR, Day/Night(ICR), EIS, ROI, Defog, AWB, AGC, BLC, HLC
  - 4.8mm~120mm Lens (25x Zoom)
  - Up to 300 Presets, auto scan, 8 tour, 5 pattern, auto pan
  - IR Range of 100 Mtr., IP66, Support PoE+
  - Mobile Software: iCMOB, gCMOB, CMS Software: KVMS Pro Lite

## CP-UNC-TC81L5C-VMD-LQ

8MP IR Network Bullet Camera



- Features:**
- 1/2.7" 8MP PS CMOS Image Sensor
  - Max. 8MP (3840×2160) @25/30 fps
  - Instastream, H.265 and H.264+ Triple-stream encoding
  - WDR(120dB), Day/Night(ICR), 3D-DNR, ROI, AWB, AGC, BLC, HLC
  - 3.6mm fixed lens (2.8mm, 6mm optional)
  - IR Range of 50 Mtrs, IP67, SD Card, PoE, IK10
  - Support Built-in Mic
  - Mobile Software: iCMOB, gCMOB, CMS Software: KVMS Pro Lite

## CP-UNC-VC81L5C-VMD-LQ

8MP IR Network Vandal Dome Camera



- Features:**
- 1/2.7" 8MP PS CMOS Image Sensor
  - Max. 8MP (3840×2160) @25/30 fps
  - Instastream, H.265 and H.264+ Triple-stream encoding
  - WDR(120dB), Day/Night(ICR), 3D-DNR, ROI, AWB, AGC, BLC, HLC
  - 3.6mm fixed lens (2.8mm, 6mm optional)
  - IR Range of 50 Mtrs, IP67, SD Card, PoE, IK10
  - Support Built-in Mic
  - Mobile Software: iCMOB, gCMOB, CMS Software: KVMS Pro Lite

## CP-UNC-VE81ZL5C-VMD-LQ

8MP IR Network Vandal Dome Camera



- Features:**
- 1/1.8" 8MP PS CMOS Image Sensor
  - Max. 8MP (3840×2160) @25/30 fps
  - Instastream & H.265 penta-stream encoding
  - WDR(120dB), Day/Night(ICR), 3D-DNR, ROI, AWB, AGC, BLC, HLC
  - 2.7mm~12mm Motorized Lens
  - IR Range of 50 Mtrs, IP67, SD Card, PoE, IK10
  - Support Built-in Mic
  - Mobile Software: iCMOB, gCMOB, CMS Software: KVMS Pro Lite

### 4 MP PTZ Project Series

## CP-UNP-F4521L30-DPQ

2MP 45x IR Network PTZ Camera



- Features:**
- 1/2.8" 2MP PS CMOS Image Sensor
  - Max. 2MP (1920x1080) @ 25/30fps
  - Powerful 45x Optical and 16x Digital zoom
  - WDR(120dB), 2D/3D DNR, Day/Night(ICR), ROI, Defog, AWB, BLC, HLC, AGC
  - Up to 300 Presets, 5 Scan, 8 Tour, 5 Pattern
  - IR Range of 300 Mtrs.
  - IP67, IK10, Support PoE+
  - Mobile Software: iCMOB, gCMOB, CMS Software: KVMS Pro Lite

## CP-UNP-E2581L10-DA

4MP+4MP 25x IR Network PTZ Camera



- Features:**
- Panorama: 1/2.8" 4Megapixel F1.0 CMOS
  - Detail: 1/2.8" 4Megapixel STARVIS™ CMOS
  - 25x optical zoom
  - Max. 25/30fps@4MP
  - IR Range up to 100 Mtrs.
  - Auto tracking 3.0
  - Perimeter protection, Active deterrence, IP66, PoE
  - Mobile Software: iCMOB, gCMOB, CMS Software: KVMS Pro

## CP-UNP-E3241L18-DAQ

4MP WDR 32x IR Network PTZ Camera



- Features:**
- 1/2.8" 4MP CMOS Image Sensor
  - Max. 4MP (2688x1520) @25/30 fps
  - Instastream & H.265 triple-stream encoding
  - WDR(120dB), Day/Night(ICR), 3D-DNR, ROI, AGC, BLC, HLC
  - 4.8 mm~154 mm Lens (32x Zoom)
  - IR Range of 180 Mtrs, IP67, PoE
  - Mobile Software: iCMOB, gCMOB, CMS Software: KVMS Pro Lite

## CP-UNP-E3241L20-DF

4MP 32x Dual Light Network Panoramic PTZ Camera



- Features:**
- 1/2.8" 4MP CMOS Image Sensor
  - 32x optical zoom
  - Max. 4MP(2560 × 1440) @25/30fps
  - IR Range up to 200 Mtrs.
  - Auto-tracking, Perimeter protection
  - Support Face Detection
  - IP66, PoE, Sound and light alarm, 180° Panoramic Splicing
  - Mobile Software: iCMOB, gCMOB, CMS Software: KVMS Pro Lite

## CP-UNP-3051L

8MP 33x Network IR PTZ Camera



- Features:**
- 1/1.8" 8MP CMOS Image sensor
  - Max. 8MP (3840×2160)@25/30fps
  - H.265/H.264 encoding
  - WDR(120dB), Day/Night(ICR), 2D/3D-DNR, Defog, ROI, EIS, AGC, BLC, HLC
  - 6.5mm ~ 214.5mm Lens, (33x Zoom)
  - Up to 300 Presets, 8 tour, 5 pattern, 5 scan
  - IR Range of 500 Mtr., IP67, Support Hi-PoE
  - Mobile Software: iCMOB, gCMOB, CMS Software: KVMS Pro Lite

### Highend PTZ Project Series

## CP-UNP-H4081L50-DPQ

2MP 45x WDR Network PTZ Camera



- Features:**
- 1/2.8" 2MP CMOS Image Sensor
  - Max. 2MP (1920x1080) @25/30 fps
  - Instastream & H.265 quad-stream encoding
  - WDR(120dB), Day/Night(ICR), 3D-DNR, ROI, AGC, BLC, HLC
  - 3.95 mm- 177.75 mm Lens (45x Zoom)
  - IR Range of 500 Mtrs, IP67, IK10 PoE
  - Mobile Software: iCMOB, gCMOB, CMS Software: KVMS Pro Lite

## CP-UNP-F4541L30-DPQ

4MP 45x WDR Network IR PTZ Camera



- Features:**
- 1/2.8" 4MP CMOS Image Sensor
  - Max. 4MP (2688x1520) @25/30 fps
  - Instastream & H.265 quad-stream encoding
  - WDR(120dB), Day/Night(ICR), 3D-DNR, ROI, AGC, BLC, HLC
  - 3.95 mm- 177.75 mm Lens (45x Zoom)
  - IR Range of 300 Mtrs, IP67, PoE
  - Mobile Software: iCMOB, gCMOB, CMS Software: KVMS Pro Lite

## CP-UNP-H4081L50-DRP

8MP 40x IR Network PTZ Camera



- Features:**
- 1/1.8" 8MP CMOS Image sensor
  - Max. 8MP (3840×2160)@25/30fps
  - Instastream/H.265/H.264+/H.264 triple-stream
  - WDR(120dB), 2D/3D-DNR, Day/Night(ICR), EIS, ROI, Defog, AWB, AGC, BLC, HLC
  - 5.6mm~223mm Lens (40x Zoom)
  - Up to 300 Presets, 8 tour, 5 pattern, 5 scan
  - IR Range of 500 Mtr., IP67, Support Hi-PoE
  - Mobile Software: iCMOB, gCMOB, CMS Software: KVMS Pro Lite

## Eco Series

### CP-ENC-D41PL3C-GP

4MP Full Color Network Bullet Camera



- Features:
- 1/3" 4MP CMOS Image Sensor
  - Max. 4MP (2560x1440) @25/30fps
  - H.265 and H.264 Video stream Encoding
  - DWDR, AWB, BLC, HLC
  - 2.8mm (3.6mm Optional)
  - Illumination Range of 30 Mtrs,
  - Support Built-in Mic

### CP-ENC-D41PL3C-GP

4MP Full Color Network Dome Camera



- Features:
- 1/3" 4MP CMOS Image Sensor
  - Max. 4MP (2560x1440) @25/30fps
  - H.265 and H.264 Video stream Encoding
  - DWDR, AWB, BLC, HLC
  - 2.8mm (3.6mm Optional)
  - Illumination Range of 30 Mtrs, Built-in Mic
  - Support Built-in Mic

### CP-ENC-D51PL3C-GP

5MP Full Color Network Dome Camera



- Features:
- 1/3" 5MP CMOS Image Sensor
  - Max 5MP (2688x1520)@25/30fps
  - H.265 and H.264 Video stream Encoding
  - DWDR, AWB, BLC, HLC
  - 2.8mm (3.6mm Optional)
  - Illumination Range of 30 Mtrs
  - Support Built-in Mic

### CP-ENC-T51PL3C-GP

5MP Full Color Network Bullet Camera



- Features:
- 1/3" 5MP CMOS Image Sensor
  - Max 5MP (2688x1520)@25/30fps
  - H.265 and H.264 Video stream Encoding
  - DWDR, AWB, BLC, HLC
  - 2.8mm (3.6mm Optional)
  - Illumination Range of 30 Mtrs
  - Support Built-in Mic

### CP-ENC-D81PL3C

8MP IR Network Dome Camera



- Features:
- 1/3" 8MP CMOS Image Sensor
  - Max 8MP (3840x2160)@25/30fps
  - H.265 and H.264 Video stream Encoding
  - DWDR, AWB, BLC, HLC
  - 2.8mm (3.6mm Optional)
  - IR Range of 30 Mtrs
  - Support Built-in Mic

### CP-ENC-T81PL3C

8MP IR Network Bullet Camera



- Features:
- 1/3" 8MP CMOS Image Sensor
  - Max 8MP (3840x2160)@25/30fps
  - H.265 and H.264 Video stream Encoding
  - DWDR, AWB, BLC, HLC
  - 2.8mm (3.6mm Optional)
  - IR Range of 30 Mtrs
  - Support Built-in Mic

## Advanced Surveillance by Intelligent IP Cameras



# Banking (BFSI) Surveillance Solution *Powered by AI*

## Vault

- Full HD vandal dome with alarm integration
- AI smart motion detection



## Counter & Visitor Area

- Panoramic fisheye camera with heat map
- Audio broadcast



## ATM

- Pinhole camera



## Cash van

- Mobile surveillance solution with DSM and ADAS



## Reception

- Full HD WDR dome camera



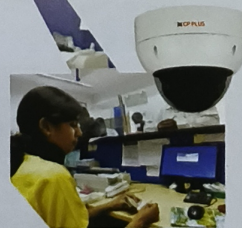
## Control Room

- EVMS Pro VMS for integrated command control room



## Cash Counter

- Full HD 60fpsvandal dome
- Edge recording



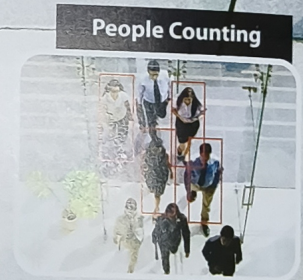
## Bank Entrance

- Full HD WDR dome camera
- Face detection/ recognition



# AI-Powered Clarity for Tomorrow's Security

## Turning Vision into Action



**ViDu** | **MADE IN Bharat**  
SERIES



2-8MP Resolution



Multi Stream Support



Alarm I/O Support



AI Analytics Support



Audio I/O



Onvif Support\*



Defog



SD Card Support  
512GB

## 2 MP Vidu Series

### CP-CNV-DA21PL3

2MP IR Network Dome Camera



- Features:
- 1/2.9" 2MP CMOS Image Sensor
  - Max. 2MP (1920 × 1080) @25/30fps
  - Instastream, H.265 and H.264+ Dual-stream
  - 3.6mm fixed lens
  - DWDR, Day/Night (ICR), 3D-DNR, ROI, AWB, AGC, BLC, HLC
  - IR Range of 30 Mtrs, IP66, PoE

### CP-CNV-DA31PL3C

3MP IR Network Dome Camera



- Features:
- 1/2.7" 3MP CMOS Image Sensor
  - Max 3MP(2304 × 1296)@25/30fps
  - Instastream, H.265 and H.264+ Dual-stream encoding
  - 3.6mm Fixed Lens
  - DWDR, Day/Night (ICR), 3D-DNR, ROI, AWB, AGC, BLC, HLC
  - Support Built-in Mic
  - IR Range of 30 Mtrs, IP66, PoE

### CP-CNV-TA21PL4

2MP IR Network Bullet Camera



- Features:
- 1/2.9" 2MP CMOS Image Sensor
  - Max. 2MP (1920 × 1080) @25/30fps
  - Instastream, H.265 and H.264+ Dual-stream
  - 3.6mm fixed lens
  - DWDR, Day/Night (ICR), 3D-DNR, ROI, AWB, AGC, BLC, HLC
  - IR Range of 40 Mtrs, IP66

### CP-CNV-TC21ZL6-VMD

2MP IR Network Bullet Camera



- Features:
- 1/2.9" 2MP CMOS Image Sensor
  - Max. 2MP (1920 × 1080) @25/30fps
  - Instastream, H.265 and H.264+ Triple-stream encoding
  - 2.7mm~13.5mm Motorized Lens
  - WDR, 3D-DNR, ROI, AWB, AGC, BLC, HLC
  - IR Range of 60 Mtrs, IP67, Micro SD Card, PoE

### CP-CNV-TC21ZL8-VMD

2MP IR Network Bullet Camera



- Features:
- 1/2.8" 2MP CMOS Image Sensor
  - Max. 2MP (1920 × 1080) @25/30fps
  - Instastream, H.265 and H.264+ Triple-stream encoding
  - 7mm~35mm Motorized Lens
  - WDR, 3D-DNR, ROI, AWB, AGC, BLC, HLC
  - IR Range of 80 Mtrs, IP67, Micro SD Card, PoE

### CP-CNV-TD21L5C-MD-LQ

2MP Dual Light Network Bullet Camera



- Features:
- 1/2.8" 2MP CMOS Image Sensor
  - Max. 2MP (1920 × 1080) @25/30fps
  - Instastream, H.265 and H.264+ Video stream Encoding
  - 3.6mm Fixed Lens
  - WDR, 3D-DNR, ROI, AWB, AGC, BLC, HLC
  - Built-in Mic, Micro SD-Card, PoE
  - IR Range of 50 Mtr., White Light Range of 30 Mtr., IP67

### CP-CNV-TD21ZL6C-VMD-LQ

2MP Dual Light Network Bullet Camera



- Features:
- 1/2.8" 2MP CMOS Image Sensor
  - Max. 2MP (1920 × 1080) @25/30fps
  - Instastream, H.265 and H.264+ Video stream Encoding
  - 2.8mm~12mm Motorized Lens
  - WDR, 3D-DNR, ROI, AWB, AGC, BLC, HLC
  - Built-in Mic, Micro SD Card, PoE
  - IR Range of 60 Mtr., White Light Range of 40Mtr., IP67

### CP-CNV-TF21ZL8C-VMD

2MP IR Network Bullet Camera



- Features:
- 1/2.7" 2MP CMOS Image Sensor
  - Max. 2MP (1920 × 1080) @25/30fps
  - Instastream, H.265 and H.264+ Video stream Encoding
  - 2.8mm~13.5mm Motorized Lens
  - WDR, 3D-DNR, ROI, AWB, AGC, BLC, HLC
  - Support Built-in Mic
  - IR Range of 80 Mtrs, IP66, Micro SD Card, PoE

### CP-CNV-VC21ZL5-VMD

2MP IR Network Vandal Dome Camera



- Features:
- 1/2.9" 2MP CMOS Image Sensor
  - Max. 2MP (1920 × 1080) @25/30fps
  - Instastream, H.265 and H.264+ Triple-stream encoding
  - 2.7mm~13.5mm Motorized Lens
  - WDR, 3D-DNR, ROI, AWB, AGC, BLC, HLC
  - IR Range of 50 Mtrs, IP67, IK10, Micro SD Card, PoE

### CP-CNV-VD21L4C-MD-LQ

2MP Dual Light Network Bullet Camera



- Features:
- 1/2.8" 2MP CMOS Image Sensor
  - Max 2MP (1920x1080)@20fps
  - Instastream, H.265 and H.264+ Video stream Encoding
  - 3.6mm Fixed Lens
  - WDR, 3D-DNR, ROI, AWB, AGC, BLC, HLC
  - IK10, Built-in Mic, Micro SD Card, PoE
  - IR Range of 40 Mtrs, White Light Range of 30Mtrs., IP67

### CP-CNV-VD21ZL5-VMD-Q

2MP Dual Light Network Bullet Camera



- Features:
- 1/2.8" 2MP CMOS Image Sensor
  - Max. 2MP (1920 × 1080) @25/30fps
  - Instastream, H.265 and H.264+ Video stream Encoding
  - 2.8mm~12mm Motorized Lens
  - WDR, 3D-DNR, ROI, AWB, AGC, BLC, HLC
  - IK10, Built-in Mic, Micro SD Card, PoE
  - IR Range of 50 Mtr., White Light Range of 30 Mtr., IP67

### CP-CNV-VD21ZL5C-VMD-LQ

2MP Dual Light Network Vandal Dome Camera



- Features:
- 1/2.8" 2MP CMOS Image Sensor
  - Max. 2MP (1920 × 1080) @25/30fps
  - Instastream, H.265 and H.264+ Video stream Encoding
  - 2.8mm~12mm Motorized Lens
  - WDR, 3D-DNR, ROI, AWB, AGC, BLC, HLC
  - IK10, Built-in Mic, Micro SD Card, PoE
  - IR Range of 50 Mtr., White Light Range of 30 Mtr., IP67

## 3 MP Vidu Series

### CP-CNV-VF21ZL6C-VMD

2MP IR Network Vandal Dome Camera



- Features:
- 1/2.7" 2MP CMOS Image Sensor
  - Max. 2MP (1920 × 1080) @25/30fps
  - Instastream, H.265 and H.264+ Video stream Encoding
  - 2.7mm~13.5mm Motorized Lens
  - WDR, 3D-DNR, ROI, AWB, AGC, BLC, HLC
  - Support Built-in Mic
  - IR Range of 60 Mtrs, IP66, IK10, Micro SD Card, PoE

### CP-CNV-TA31PL4C

3MP IR Network Bullet Camera



- Features:
- 1/2.7" 3MP CMOS Image Sensor
  - Max 3MP(2304 × 1296)@25/30fps
  - Instastream, H.265 and H.264+ Dual-stream encoding
  - 3.6mm Fixed Lens
  - DWDR, 3D-DNR, Defog, AWB, AGC, BLC, HLC
  - Support Built-in Mic
  - IR Range of 40 Mtrs, IP66, PoE

### CP-CNV-TC31L6-VMD

3MP IR Network Bullet Camera



- Features:
- 1/2.7" 3MP CMOS Image Sensor
  - Max 3MP(2304 × 1296)@25/30fps
  - Instastream, H.265 and H.264+ Triple-stream encoding
  - 3.6mm Fixed Lens
  - WDR, 3D-DNR, ROI, AWB, AGC, BLC, HLC
  - IR Range of 60 Mtrs, IP67, Micro SD Card, PoE

### CP-CNV-VC31L5-VMD

3MP IR Network Vandal Dome Camera



- Features:
- 1/2.7" 3MP CMOS Image Sensor
  - Max 3MP(2304 × 1296)@25/30fps
  - Instastream, H.265 and H.264+ Triple-stream encoding
  - 3.6mm Fixed Lens
  - WDR, 3D-DNR, ROI, AWB, AGC, BLC, HLC
  - IR Range of 50 Mtrs, IP67, IK10, Micro SD Card, PoE

## 4 MP Vidu Series

### CP-CNV-DA41PL3

4MP IR Network Dome Camera



- Features:
- 1/2.8" 4MP CMOS Image Sensor
  - Max. 4MP (2560x1440) @25/30fps
  - Instastream, H.265 and H.264+ Dual-stream
  - 3.6mm fixed lens
  - DWDR, Day/Night (ICR), 3D-DNR, ROI, AWB, AGC, BLC, HLC
  - IR Range of 30 Mtrs, IP66, PoE

### CP-CNV-DA41PL3C

4MP IR Network Dome Camera



- Features:
- 1/2.7" 4MP CMOS Image Sensor
  - Max. 4MP (2560x1440) @25/30fps
  - Instastream, H.265 and H.264+ Dual-stream encoding
  - 3.6mm Fixed Lens
  - DWDR, Day/Night (ICR), 3D-DNR, ROI, AWB, AGC, BLC, HLC
  - Support Built-in Mic
  - IR Range of 30 Mtrs, IP66, PoE

### CP-CNV-TA41PL4

4MP IR Network Bullet Camera



- Features:
- 1/2.9" 4MP CMOS Image Sensor
  - Max. 4MP (2560x1440) @25/30fps
  - Instastream, H.265 and H.264+ Dual-stream
  - 3.6mm fixed lens
  - DWDR, Day/Night (ICR), 3D-DNR, ROI, AWB, AGC, BLC, HLC
  - IR Range of 40 Mtrs, IP66

### CP-CNV-TA41PL4C

4MP IR Network Bullet Camera



- Features:
- 1/2.7" 4MP CMOS Image Sensor
  - Max. 4MP (2560x1440) @25/30fps
  - Instastream, H.265 and H.264+ Dual-stream encoding
  - 3.6mm Fixed Lens
  - DWDR, 3D-DNR, Defog, AWB, AGC, BLC, HLC
  - Support Built-in Mic
  - IR Range of 40 Mtrs, IP66, PoE

### CP-CNV-TC41L6-VMD

4MP IR Network Bullet Camera



- Features:
- 1/2.7" 4MP CMOS Image Sensor
  - Max. 4MP (2560x1440) @25/30fps
  - Instastream, H.265 and H.264+ Triple-stream encoding
  - 3.6mm Fixed Lens
  - WDR, 3D-DNR, ROI, AWB, AGC, BLC, HLC
  - IR Range of 60 Mtrs, IP67, Micro SD Card, PoE

### CP-CNV-TC41ZL8-VMD

4MP IR Network Bullet Camera



- Features:
- 1/2.8" 4MP CMOS Image Sensor
  - Max. 4MP (2560x1440) @25/30fps
  - Instastream, H.265 and H.264+ Triple-stream encoding
  - 7mm~35mm Motorized Lens
  - WDR, 3D-DNR, ROI, AWB, AGC, BLC, HLC
  - IR Range of 80 Mtrs, IP67, Micro SD Card, PoE

### CP-CNV-TC41ZL6-VMD

4MP IR Network Bullet Camera



- Features:
- 1/2.8" 4MP CMOS Image Sensor
  - Max. 4MP (2560x1440) @25/30fps
  - Instastream, H.265 and H.264+ Triple-stream encoding
  - 2.7mm~13.5mm Motorized Lens
  - WDR, 3D-DNR, ROI, AWB, AGC, BLC, HLC
  - IR Range of 60 Mtrs, IP67, Micro SD Card, PoE

### CP-CNV-TF41ZL8C-VMD

4MP IR Network Bullet Camera



- Features:
- 1/2.7" 4MP CMOS Image Sensor
  - Max. 4MP (2560x1440) @25/30fps
  - Instastream, H.265 and H.264+ Video stream Encoding
  - 2.7mm~13.5mm Motorized Lens
  - WDR, 3D-DNR, ROI, AWB, AGC, BLC, HLC
  - Support Built-in Mic
  - IR Range of 80 Mtrs, IP66, Micro SD Card, PoE

### CP-CNV-TG41ZL8C-VMD

4MP IR Network Bullet Camera



- Features:
- 1/2.9" 4MP CMOS Image Sensor
  - Max 4MP (2560 x 1440) @25fps
  - Instastream, H.265 and H.264+ Video stream Encoding
  - 2.7mm~13.5mm Motorized Lens
  - WDR, 3D-DNR, ROI, AWB, AGC, BLC, HLC
  - Support Built-in Mic
  - IR Range of 80 Mtrs, IP67, Micro SD Card, PoE

### CP-CNV-VC41L5-VMD

4MP IR Network Vandal Dome Camera



- Features:
- 1/2.7" 4MP CMOS Image Sensor
  - Max. 4MP (2560x1440) @25/30fps
  - Instastream, H.265 and H.264+ Triple-stream encoding
  - 3.6mm Fixed Lens
  - WDR, 3D-DNR, ROI, AWB, AGC, BLC, HLC
  - IR Range of 50 Mtrs, IP67, IK10, Micro SD Card, PoE

### CP-CNV-VC41ZL5-VMD

4MP IR Network Vandal Dome Camera



- Features:
- 1/2.8" 4MP CMOS Image Sensor
  - Max. 4MP (2560x1440) @25/30fps
  - Instastream, H.265 and H.264+ Triple-stream encoding
  - 2.7mm~13.5mm Motorized Lens
  - WDR, 3D-DNR, ROI, AWB, AGC, BLC, HLC
  - IR Range of 50 Mtrs, IP67, IK10, Micro SD Card, PoE

### CP-CNV-VF41ZL6C-VMD

4MP IR Network Vandal Dome Camera



- Features:
- 1/2.7" 4MP CMOS Image Sensor
  - Max. 4MP (2560x1440) @25/30fps
  - Instastream, H.265 and H.264+ Video stream Encoding
  - 2.7mm~13.5mm Motorized Lens
  - WDR, 3D-DNR, ROI, AWB, AGC, BLC, HLC
  - Support Built-in Mic
  - IR Range of 60 Mtrs, IP66, IK10, Micro SD Card, PoE

## 5 MP Vidu Series

### CP-CNV-DA51PL3

5MP IR Network Dome Camera



- Features:
- 1/2.8" 5MP CMOS Image Sensor
  - Max. 5MP (2880 x 1620) @25/30fps
  - Instastream, H.265 and H.264+ Dual-stream
  - 3.6mm fixed lens
  - DWDR, Day/Night (ICR), 3D-DNR, ROI, AWB, AGC, BLC, HLC
  - IR Range of 30 Mtrs, IP66, PoE

### CP-CNV-DA51PL3C

5MP IR Network Dome Camera



- Features:
- 1/2.5" 5MP CMOS Image Sensor
  - Max. 5MP (2880x1620) @25fps
  - Instastream, H.265 and H.264+ Dual-stream encoding
  - 3.6mm Fixed Lens
  - DWDR, Day/Night (ICR), 3D-DNR, ROI, AWB, AGC, BLC, HLC
  - Support Built-in Mic
  - IR Range of 30 Mtrs, IP66, PoE

### CP-CNV-TA51PL4

5MP IR Network Bullet Camera



- Features:
- 1/2.8" 5MP CMOS Image Sensor
  - Max. 5MP (2880 x 1620) @25/30fps
  - Instastream, H.265 and H.264+ Dual-stream
  - 3.6mm fixed lens
  - DWDR, Day/Night (ICR), 3D-DNR, ROI, AWB, AGC, BLC, HLC
  - IR Range of 40 Mtrs, IP66

### CP-CNV-TA51PL4C

5MP IR Network Bullet Camera



- Features:
- 1/2.5" 5MP CMOS Image Sensor
  - Max. 5MP (2880x1620) @25fps
  - Instastream, H.265 and H.264+ Dual-stream encoding
  - 3.6mm Fixed Lens
  - DWDR, Day/Night (ICR), 3D-DNR, ROI, AWB, AGC, BLC, HLC
  - Support Built-in Mic
  - IR Range of 30 Mtrs, IP66, PoE

### CP-CNV-TCS1ZL6-VMD

SMP IR Network Bullet Camera



- Features:
- 1/2.8" SMP CMOS Image Sensor
  - Max. SMP (2880 x 1620) @25/30fps
  - Instastream, H.265 and H.264+ Triple-stream encoding
  - 2.7mm~13.5mm Motorized Lens
  - WDR, 3D-DNR, ROI, AWB, AGC, BLC, HLC
  - IR Range of 60 Mtrs, IP67, Micro SD Card, PoE

### CP-CNV-TCS1L6-VMD

SMP IR Network Bullet Camera



- Features:
- 1/2.7" SMP CMOS Image Sensor
  - Max. SMP (2880 x 1620) @25/30fps
  - Instastream, H.265 and H.264+ Triple-stream encoding
  - 3.6mm Fixed Lens
  - WDR, 3D-DNR, ROI, AWB, AGC, BLC, HLC
  - IR Range of 60 Mtrs, IP67, Micro SD Card, PoE

### CP-CNV-TCS1ZL8-VMD

SMP IR Network Bullet Camera



- Features:
- 1/2.8" SMP CMOS Image Sensor
  - Max. SMP (2880 x 1620) @25/30fps
  - Instastream, H.265 and H.264+ Triple-stream encoding
  - 7mm~35mm Motorized Lens
  - WDR, 3D-DNR, ROI, AWB, AGC, BLC, HLC
  - IR Range of 80 Mtrs, IP67, Micro SD Card, PoE

### CP-CNV-TD51L5C-MD-LQ

SMP Dual Light Network Bullet Camera



- Features:
- 1/2.8" SMP CMOS Image Sensor
  - Max. SMP (2880 x 1620) @25/30fps
  - Instastream, H.265 and H.264+ Video stream Encoding
  - 3.6mm Fixed Lens
  - WDR, 3D-DNR, ROI, AWB, AGC, BLC, HLC
  - Built-in Mic, Micro SD Card, PoE
  - IR Range of 50 Mtr., White Light Range of 30 Mtr., IP67

### CP-CNV-TD51ZL6C-VMD-LQ

SMP Dual Light Network Bullet Camera



- Features:
- 1/2.8" SMP CMOS Image Sensor
  - Max. SMP (2880 x 1620) @25/30fps
  - Instastream, H.265 and H.264+ Video stream Encoding
  - 2.8mm~12mm Motorized Lens
  - WDR, 3D-DNR, ROI, AWB, AGC, BLC, HLC
  - Built-in Mic, Micro SD Card, PoE
  - IR Range of 60 Mtr., White Light Range of 40 Mtr., IP67

### CP-CNV-TF51ZL8C-VMD

SMP IR Network Bullet Camera



- Features:
- 1/2.7" SMP CMOS Image Sensor
  - Max. SMP (2880 x 1620) @25/30fps
  - Instastream, H.265 and H.264+ Video stream Encoding
  - 2.7mm~13.5mm Motorized Lens
  - WDR, 3D-DNR, ROI, AWB, AGC, BLC, HLC
  - Support Built-in Mic
  - IR Range of 80 Mtrs, IP66, Micro SD Card, PoE

### CP-CNV-TG51ZL8C-VMD

SMP IR Network Bullet Camera



- Features:
- 1/2.9" SMP CMOS Image Sensor
  - Max. SMP (2880 x 1620) @25fps
  - Instastream, H.265 and H.264+ encoding
  - 2.7mm~13.5mm Motorized Lens
  - WDR, 3D-DNR, ROI, AWB, AGC, BLC, HLC
  - Support Built-in Mic
  - IR Range of 80 Mtrs, IP67, Micro SD Card, PoE

### CP-CNV-VC51L5-VMD

SMP IR Network Vandal Dome Camera



- Features:
- 1/2.7" SMP CMOS Image Sensor
  - Max. SMP (2880 x 1620) @25/30fps
  - Instastream, H.265 and H.264+ Triple-stream encoding
  - 3.6mm Fixed Lens
  - WDR, 3D-DNR, ROI, AWB, AGC, BLC, HLC
  - IR Range of 50 Mtrs, IP67, IK10, Micro SD Card, PoE

### CP-CNV-VC51ZL5-VMD

SMP IR Network Vandal Dome Camera



- Features:
- 1/2.8" SMP CMOS Image Sensor
  - Max. SMP (2880 x 1620) @25/30fps
  - Instastream, H.265 and H.264+ Triple-stream encoding
  - 2.7mm~13.5mm Motorized Lens
  - WDR, 3D-DNR, ROI, AWB, AGC, BLC, HLC
  - IR Range of 50 Mtrs, IP67, IK10, Micro SD Card, PoE

### CP-CNV-VD51ZL5C-VMD-LQ

SMP Dual Light Network Vandal Dome Camera



- Features:
- 1/2.8" SMP CMOS Image Sensor
  - Max. SMP (2880 x 1620) @25/30fps
  - Instastream, H.265 and H.264+ Video stream Encoding
  - 2.8mm~12mm Motorized Lens
  - WDR, 3D-DNR, ROI, AWB, AGC, BLC, HLC
  - IK10, Built-in Mic, Micro SD Card, PoE
  - IR Range of 50 Mtr., White Light Range of 30 Mtr., IP67

### CP-CNV-VD51ZL6C-MD-LQ

SMP Dual Light Network Vandal Dome Camera



- Features:
- 1/2.8" SMP CMOS Image Sensor
  - Max. SMP (2880 x 1620) @25/30fps
  - Instastream, H.265 and H.264+ Video stream Encoding
  - 3.6mm Fixed Lens
  - WDR, 3D-DNR, ROI, AWB, AGC, BLC, HLC
  - IK10, Built-in Mic, Micro SD Card, PoE
  - IR Range of 40 Mtrs, White Light Range of 30Mtrs., IP67

### CP-CNV-VD51ZL5-VMD-Q

SMP Dual Light Network Vandal Dome Camera



- Features:
- 1/2.8" SMP CMOS Image Sensor
  - Max. SMP (2880 x 1620) @25/30fps
  - Instastream, H.265 and H.264+ Video stream Encoding
  - 2.8mm~12mm Motorized Lens
  - WDR, 3D-DNR, ROI, AWB, AGC, BLC, HLC
  - IK10, Built-in Mic, Micro SD Card, PoE
  - IR Range of 50 Mtr., White Light Range of 30 Mtr., IP67

## 8 MP Vidu Series

### CP-CNV-VF51ZL6C-VMD

SMP IR Network Vandal Dome Camera



- Features:
- 1/2.7" SMP CMOS Image Sensor
  - Max. SMP (2880 x 1620) @25/30fps
  - Instastream, H.265 and H.264+ Video stream Encoding
  - 2.7mm~13.5mm Motorized Lens
  - WDR, 3D-DNR, ROI, AWB, AGC, BLC, HLC
  - Support Built-in Mic
  - IR Range of 60 Mtrs, IP66, IK10, Micro SD Card, PoE

### CP-CNV-TD81L5C-MD-LQ

8MP Dual Light Network Bullet Camera



- Features:
- 1/2.8" 8MP CMOS Image Sensor
  - Max 8MP (3840x2160)@20fps
  - Instastream, H.265 and H.264+ Video stream Encoding
  - 3.6mm Fixed Lens
  - WDR, 3D-DNR, ROI, AWB, AGC, BLC, HLC
  - Built-in Mic, Micro SD Card, PoE
  - IR Range of 50 Mtr., White Light Range of 30 Mtr., IP67

### CP-CNV-TD81ZL6C-VMD-LQ

8MP Dual Light Network Bullet Camera



- Features:
- 1/2.8" 8MP CMOS Image Sensor
  - Max 8MP (3840x2160)@20fps
  - Instastream, H.265 and H.264+ Video stream Encoding
  - 2.8mm~12mm Motorized Lens
  - WDR, 3D-DNR, ROI, AWB, AGC, BLC, HLC
  - Built-in Mic, Micro SD Card, PoE
  - IR Range of 60 Mtr., White Light Range of 40 Mtr., IP67

### CP-CNV-TG81ZL8C-VMD

8MP IR Network Bullet Camera



- Features:
- 1/1.8" 8MP CMOS Image Sensor
  - Max 8MP (3840x2160)@25/30fps
  - Instastream, H.265 and H.264+ Video stream Encoding
  - 2.8mm~12mm Motorized Lens
  - WDR, 3D-DNR, ROI, AWB, AGC, BLC, HLC
  - Support Built-in Mic
  - IR Range of 80 Mtrs, IP66, Micro SD Card, PoE

### CP-CNV-VG81ZL6C-VMD

8MP IR Network Vandal Dome Camera



► Features:

- 1/1.8" 8MP CMOS Image Sensor
- Max 8MP (3840x2160)@25/30fps
- Instastream, H.265 and H.264+ Video stream Encoding
- 2.8mm~12mm Motorized Lens
- WDR, 3D-DNR, ROI, AWB, AGC, BLC, HLC
- Support Built-in Mic
- IR Range of 60 Mtrs, IP66, IK10, Micro SD Card, PoE

### CP-CNV-VD81ZL3C-VMD-LQ

8MP Dual Light Network Vandal Dome Camera



► Features:

- 1/2.8" 8MP CMOS Image Sensor
- Max 8MP (3840x2160)@20fps
- Instastream, H.265 and H.264+ Video stream Encoding
- 2.8mm~12mm Motorized Lens
- WDR, 3D-DNR, ROI, AWB, AGC, BLC, HLC
- IK10, Built-in Mic, Micro SD Card, PoE
- IR Range of 50 Mtrs, IP67, IK10, Micro SD Card, PoE

### CP-CNV-VD81L4C-MD-LQ

8MP Dual Light Network Vandal Dome Camera



► Features:

- 1/2.8" 8MP CMOS Image Sensor
- Max 8MP (3840x2160)@20fps
- Instastream, H.265 and H.264+ Video stream Encoding
- 3.6mm Fixed Lens
- WDR, 3D-DNR, ROI, AWB, AGC, BLC, HLC
- IK10, Built-in Mic, Micro SD Card, PoE
- IR Range of 40 Mtrs, White Light Range of 30Mtrs., IP67

### CP-CNV-VD81ZLS-VMD-Q

8MP Dual Light Network Vandal Dome Camera



► Features:

- 1/2.8" 8MP CMOS Image Sensor
- Max 8MP (3840x2160)@20fps
- Instastream, H.265 and H.264+ Video stream Encoding
- 2.8mm~12mm Motorized Lens
- WDR, 3D-DNR, ROI, AWB, AGC, BLC, HLC
- IK10, Built-in Mic, Micro SD Card, PoE
- IR Range of 50 Mtr., White Light Range of 30 Mtr., IP67

## 3MP Guard+ Series

### CP-CNV-DA31PL2C-GP

3MP Full-color Guard+ Network Dome Camera



► Features:

- 1/2.7" 3MP CMOS Image Sensor
- Max 3MP(2304 × 1296)@25/30fps
- Instastream, H.265 and H.264+ Dual-stream encoding
- DWDR, AWB, BLC, HLC
- 3.6mm Fixed Lens
- Illumination Range of 20 Mtrs, IP66, PoE
- Support Built-in Mic

### CP-CNV-TA31PL2C-GP

3MP Full-color Guard+ Network Bullet Camera



► Features:

- 1/2.7" 3MP CMOS Image Sensor
- Max 3MP(2304 × 1296)@25/30fps
- Instastream, H.265 and H.264+ Dual-stream encoding
- DWDR, AWB, BLC, HLC
- 3.6mm Fixed Lens
- Illumination Range of 20 Mtrs, IP66, PoE
- Support Built-in Mic

## 4MP Guard+ Series

### CP-CNV-DA41PL2C-GP

4MP Full-color Guard+ Network Dome Camera



► Features:

- 1/2.7" 4MP CMOS Image Sensor
- Max. 4MP (2560x1440) @25/30fps
- Instastream, H.265 and H.264+ Dual-stream encoding
- DWDR, AWB, BLC, HLC
- 3.6mm Fixed Lens
- Illumination Range of 20 Mtrs, IP66, PoE
- Support Built-in Mic

### CP-CNV-TA41PL2C-GP

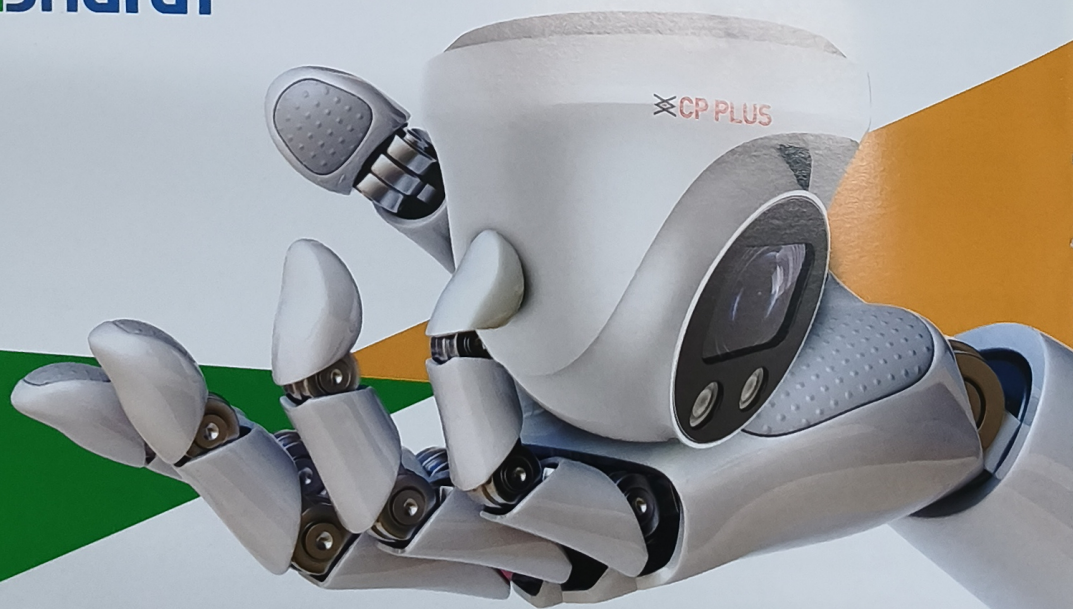
4MP Full-color Guard+ Network Bullet Camera



► Features:

- 1/2.7" 4MP CMOS Image Sensor
- Max. 4MP (2560x1440) @25/30fps
- Instastream, H.265 and H.264+ Dual-stream encoding
- DWDR, AWB, BLC, HLC
- 3.6mm Fixed Lens
- Illumination Range of 20 Mtrs, IP66, PoE
- Support Built-in Mic

**ViDu** SERIES | **Bharat** MADE IN



# Real Estate Surveillance Solution *Powered by AI*



### Open Areas

- PTZ camera with 360° view and smart tracking

### Parking

- 4K camera with wide coverage
- IVSS server for parking mgmt.
- Parking space detection
- Emergency calling point

### Lobby entrance

- Lobby outdoor unit
- 2MP WDR vandal dome camera
- Face detection/recognition

### Perimeter

- 4MP bullet camera with Motorised zoom lens
- Long range IR
- Intrusion detection
- Alarm Integration

### Entrance & Exit

- ANPR camera with boom barrier control
- Face recognition camera
- Master station for audio/video intercom

### Lifts

- Full HD wedge camera
- Wide coverage lens
- Audio recording
- Edge recording
- Wireless AP for communication

### Flats

- Flat outdoor unit for visitor
- Flat indoor unit for owner
- Alarm sensor integration
- Surveillance camera monitoring

# A Portfolio with a Truly Extensive Range of Products

We are much more than a surveillance brand. We are the future of smart living, smart business operations. We are here to take you to the smart age where India shall lead the way for the world and so we promise to never stop adding more products to our extensive portfolio.

